

# *On effective index approximations of photonic crystal slabs*



**MESA+**  
Institute for Nanotechnology

**AAMP**

nano  ned

Manfred Hammer\*, Alyona Ivanova

Applied Analysis & Mathematical Physics

MESA<sup>+</sup> Institute for Nanotechnology

University of Twente, The Netherlands

*XVIII<sup>th</sup> International Workshop on Optical Waveguide Theory and Numerical Modelling  
OWTNM 2009, Jena, Germany, April 17–18, 2009*

\* Department of Applied Mathematics, University of Twente

Phone: +31/53/489-3448

P.O. Box 217, 7500 AE Enschede, The Netherlands

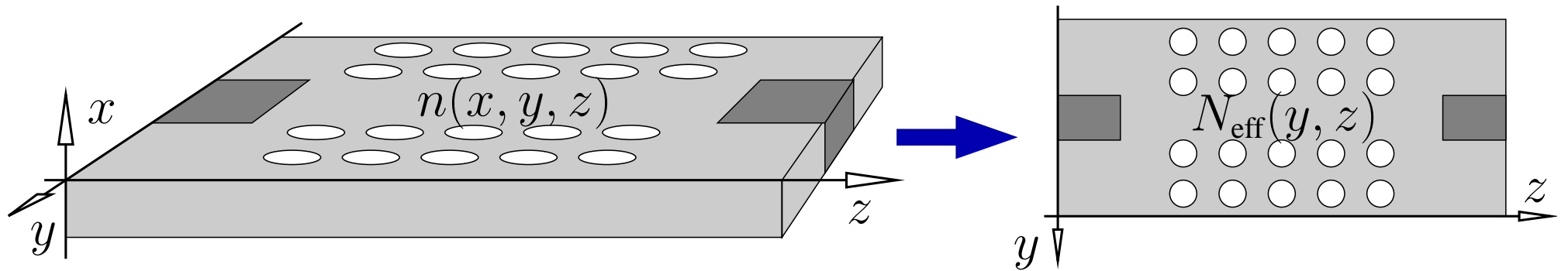
Fax: +31/53/489-4833

E-mail: [m.hammer@math.utwente.nl](mailto:m.hammer@math.utwente.nl)

# Effective index approximations

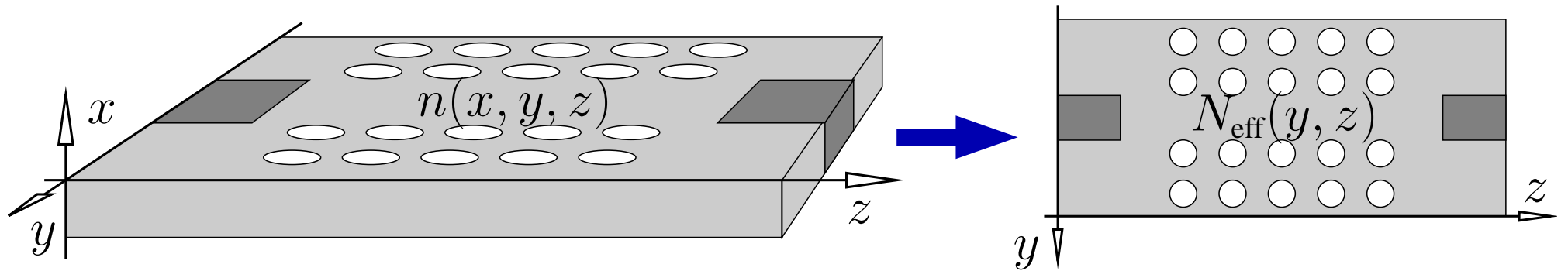
---

3D  $\rightarrow$  2D

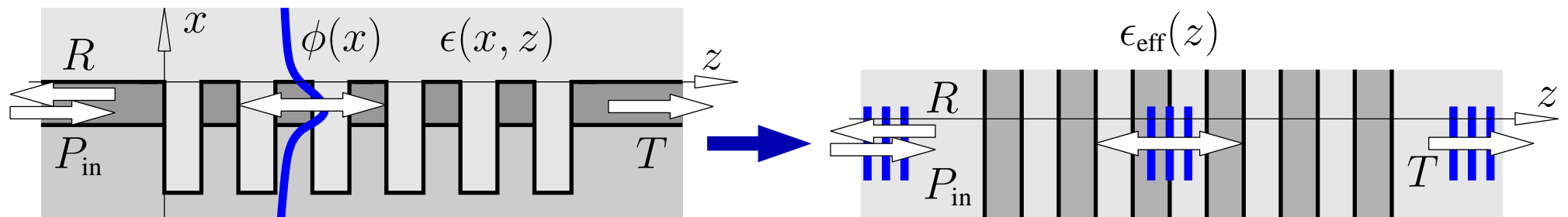


# Effective index approximations

3D  $\rightarrow$  2D



2D  $\rightarrow$  1D



# Outline

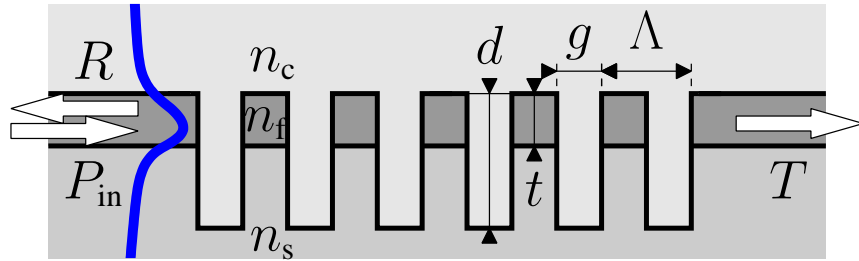
---

## Effective index approximations

- 2D  $\rightarrow$  1D, examples
- A variational view on the effective index method
- vEIM 2D  $\rightarrow$  1D, examples
- 3D  $\rightarrow$  2D, scalar approximation
  
- Outlook: vectorial formalism

## 2D -> 1D

---



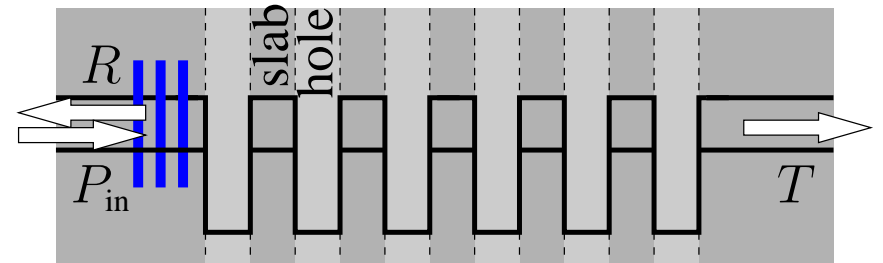
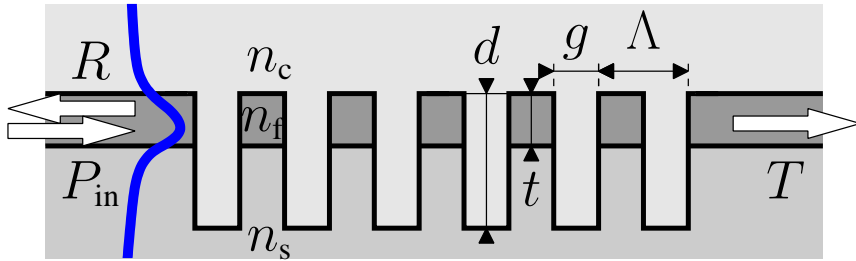
$$(n_s, n_f, n_c) = (1.45, 2.0, 1.0),$$

$$\Lambda = 0.21 \mu\text{m}, \quad g = 0.11 \mu\text{m},$$

$$d = 0.6 \mu\text{m}, \quad t = 0.2 \mu\text{m},$$

$$\text{TE}, \quad \lambda \in [0.4, 0.9] \mu\text{m}.$$

## 2D -> 1D



$$(n_s, n_f, n_c) = (1.45, 2.0, 1.0),$$

$$\Lambda = 0.21 \mu\text{m}, \quad g = 0.11 \mu\text{m},$$

$$d = 0.6 \mu\text{m}, \quad t = 0.2 \mu\text{m},$$

$$\text{TE}, \quad \lambda \in [0.4, 0.9] \mu\text{m}.$$

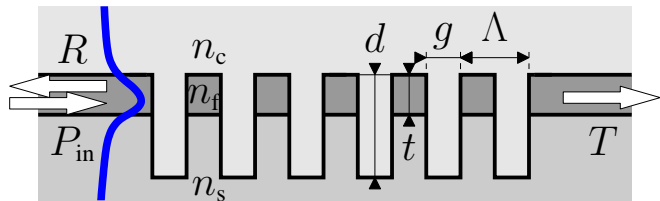
2D  $\rightarrow$  1D

effective index approximation:

$$N_{\text{eff}}^{\text{slab}} \in [1.67, 1.87],$$

$$N_{\text{eff}}^{\text{holes}} = ?$$

# Deeply etched waveguide grating

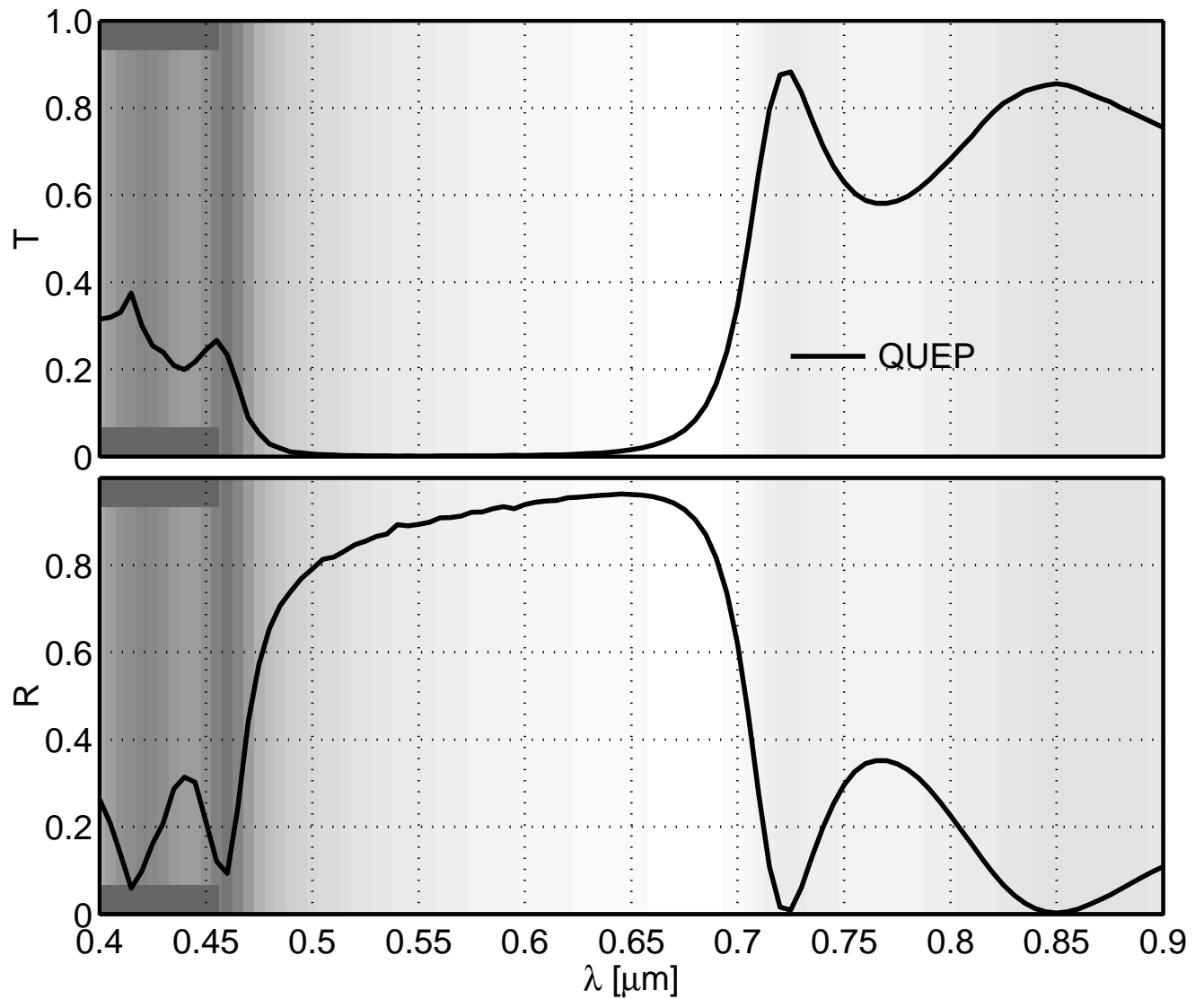


$$(n_s, n_f, n_c) = (1.45, 2.0, 1.0),$$

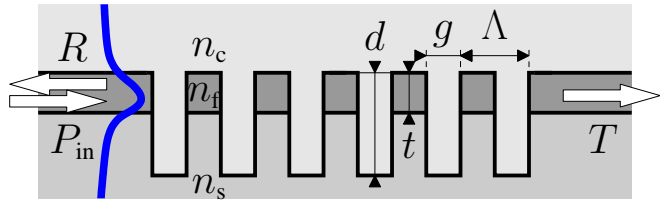
$$\Lambda = 0.21 \mu\text{m}, g = 0.11 \mu\text{m},$$

$$d = 0.6 \mu\text{m}, t = 0.2 \mu\text{m}.$$

QUEP - reference.



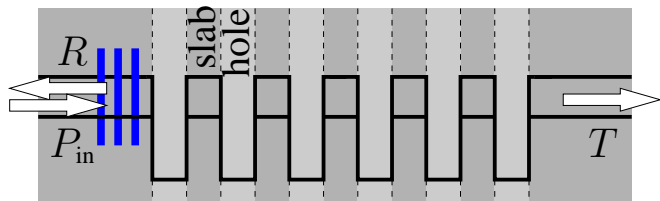
# Deeply etched waveguide grating



$$(n_s, n_f, n_c) = (1.45, 2.0, 1.0),$$

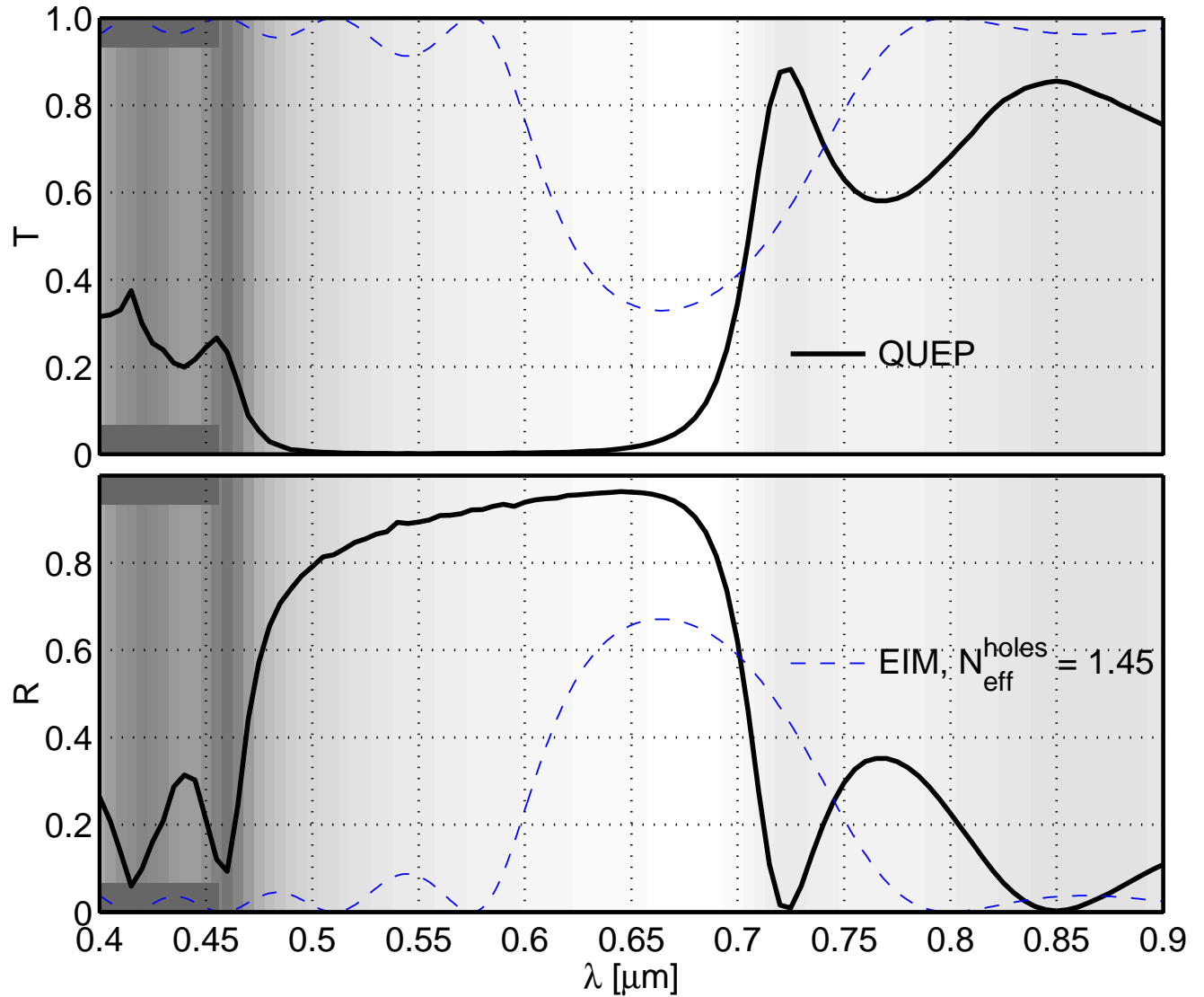
$$\Lambda = 0.21 \mu\text{m}, g = 0.11 \mu\text{m},$$

$$d = 0.6 \mu\text{m}, t = 0.2 \mu\text{m}.$$



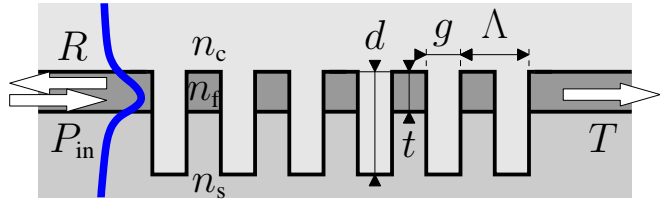
$$N_{\text{eff}}^{\text{slab}} \in [1.67, 1.87],$$

$$N_{\text{eff}}^{\text{holes}} = n_s = 1.45.$$





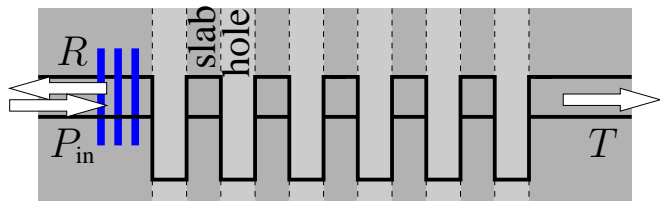
# Deeply etched waveguide grating



$$(n_s, n_f, n_c) = (1.45, 2.0, 1.0),$$

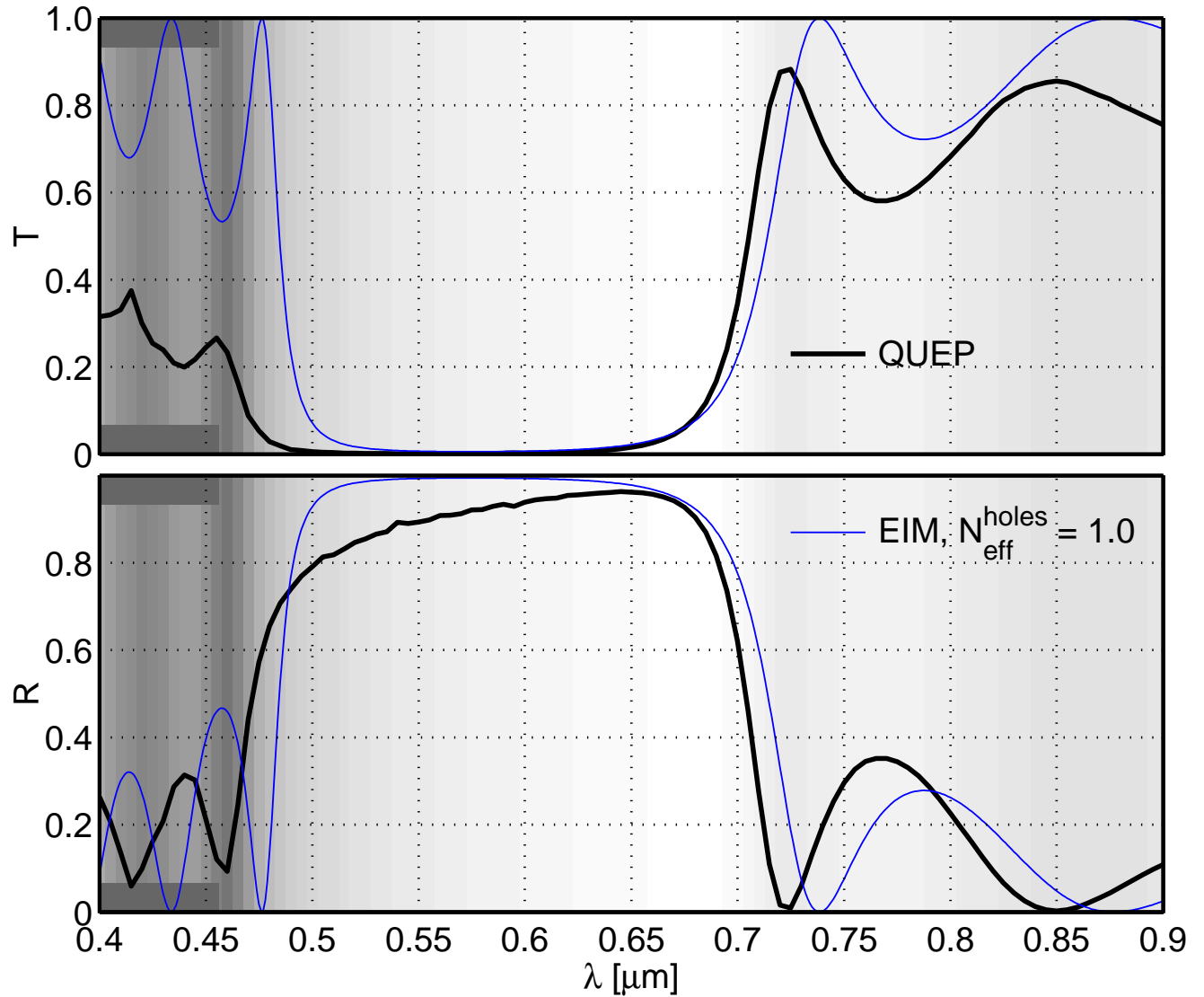
$$\Lambda = 0.21 \mu\text{m}, g = 0.11 \mu\text{m},$$

$$d = 0.6 \mu\text{m}, t = 0.2 \mu\text{m}.$$

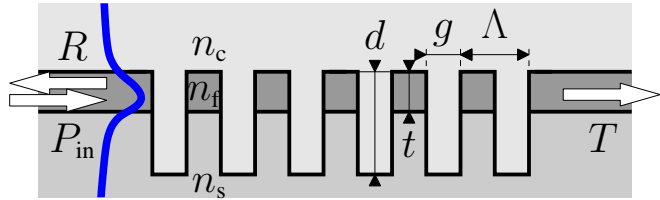


$$N_{\text{eff}}^{\text{slab}} \in [1.67, 1.87],$$

$$N_{\text{eff}}^{\text{holes}} = n_c = 1.0.$$



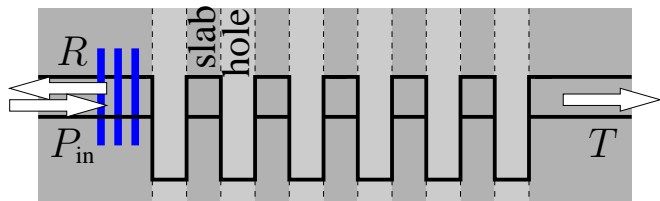
# Deeply etched waveguide grating



$$(n_s, n_f, n_c) = (1.45, 2.0, 1.0),$$

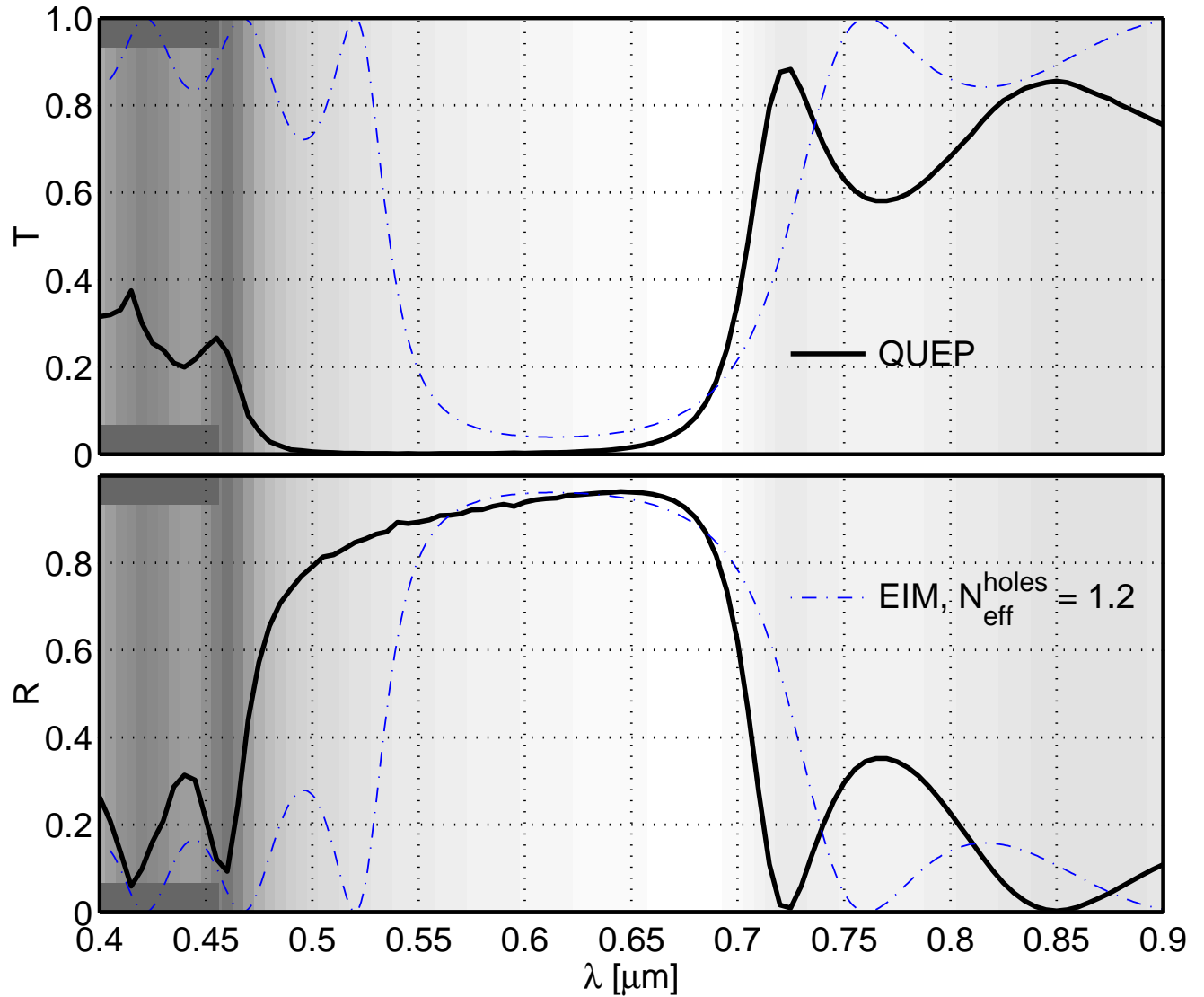
$$\Lambda = 0.21 \mu\text{m}, g = 0.11 \mu\text{m},$$

$$d = 0.6 \mu\text{m}, t = 0.2 \mu\text{m}.$$

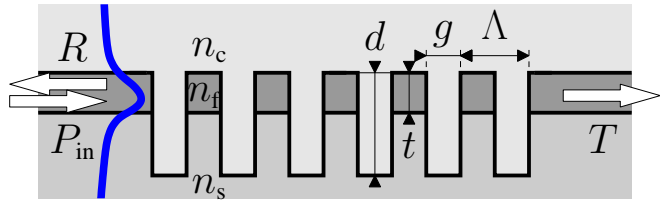


$$N_{\text{eff}}^{\text{slab}} \in [1.67, 1.87],$$

$$n_c < N_{\text{eff}}^{\text{holes}} = 1.2 < n_s.$$



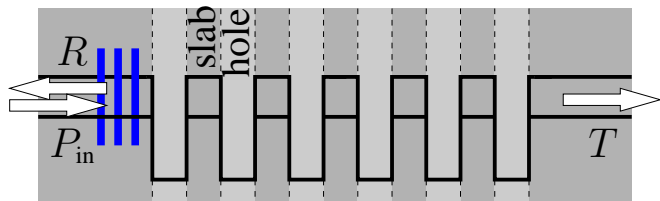
# Deeply etched waveguide grating



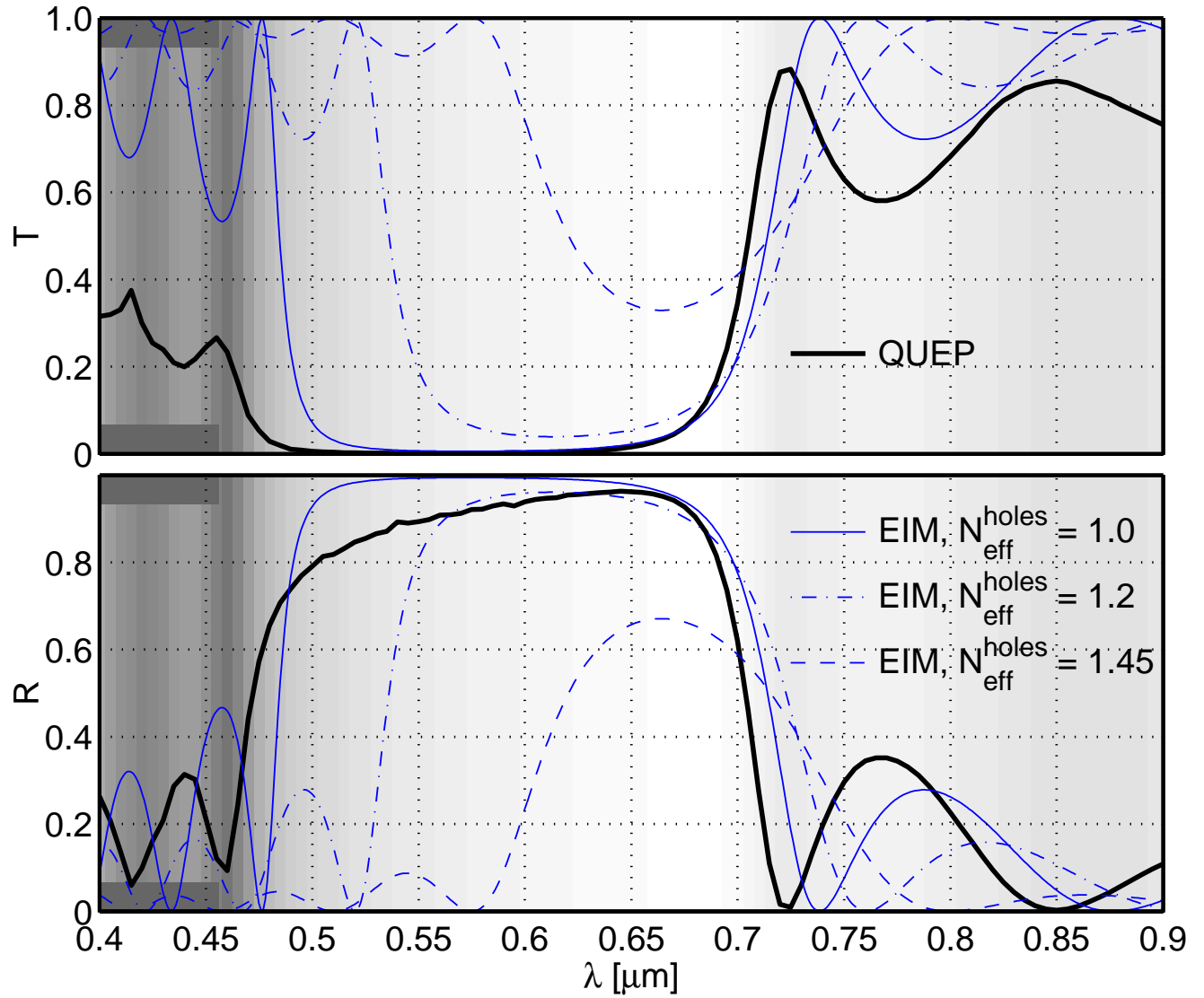
$$(n_s, n_f, n_c) = (1.45, 2.0, 1.0),$$

$$\Lambda = 0.21 \mu\text{m}, g = 0.11 \mu\text{m},$$

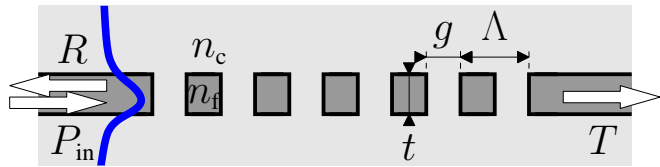
$$d = 0.6 \mu\text{m}, t = 0.2 \mu\text{m}.$$



$$N_{\text{eff}}^{\text{slab}} \in [1.67, 1.87].$$



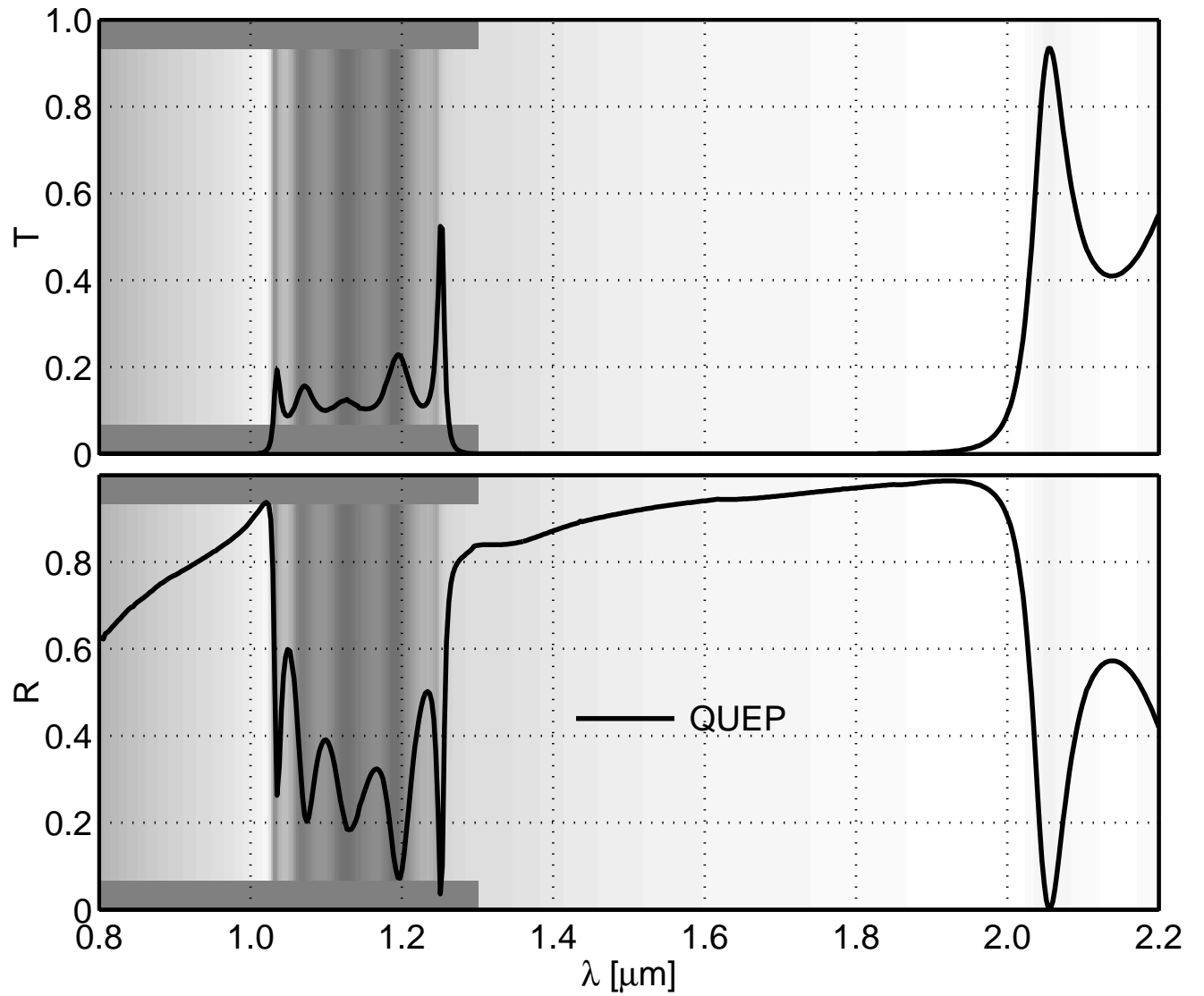
# High contrast PC membrane



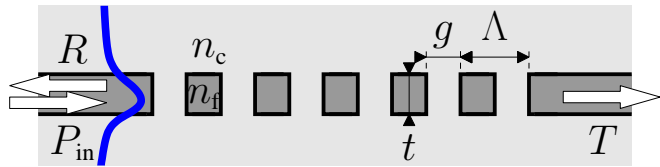
$$(n_c, n_f, n_c) = (1.0, 3.4, 1.0),$$

$$\Lambda = 0.45 \mu\text{m}, g = 0.225 \mu\text{m},$$
$$t = 0.2 \mu\text{m}.$$

QUEP - reference.



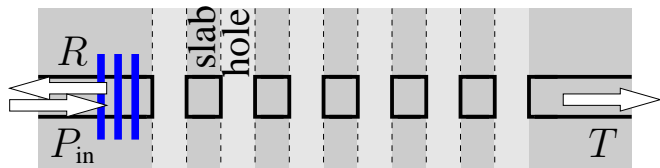
# High contrast PC membrane



$$(n_c, n_f, n_c) = (1.0, 3.4, 1.0),$$

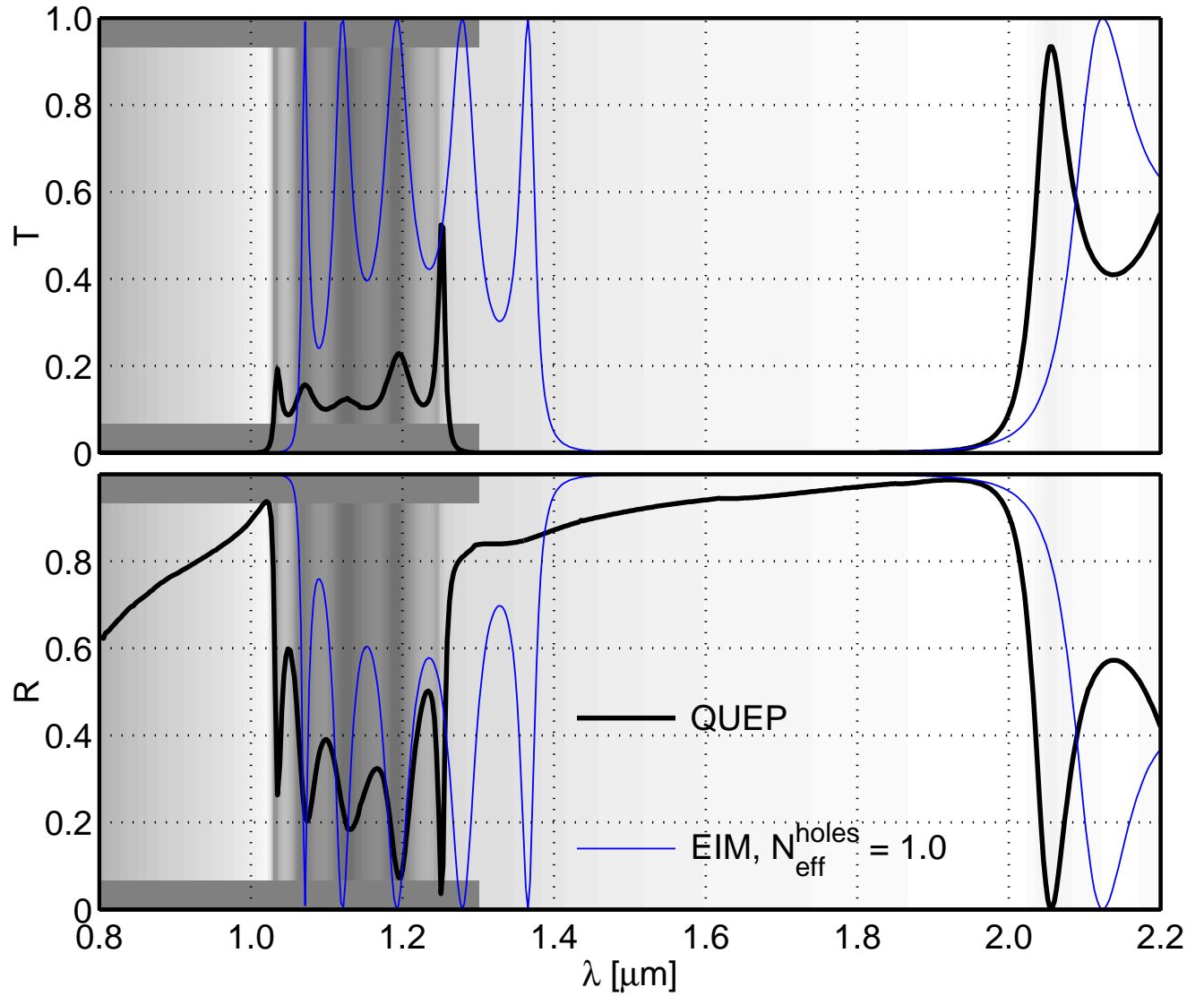
$$\Lambda = 0.45 \mu\text{m}, g = 0.225 \mu\text{m},$$

$$t = 0.2 \mu\text{m}.$$

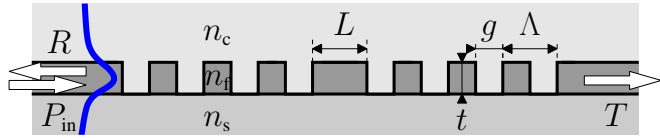


$$N_{\text{eff}}^{\text{slab}} \in [2.33, 3.09],$$

$$N_{\text{eff}}^{\text{holes}} = n_c = 1.0.$$



# Defect cavity



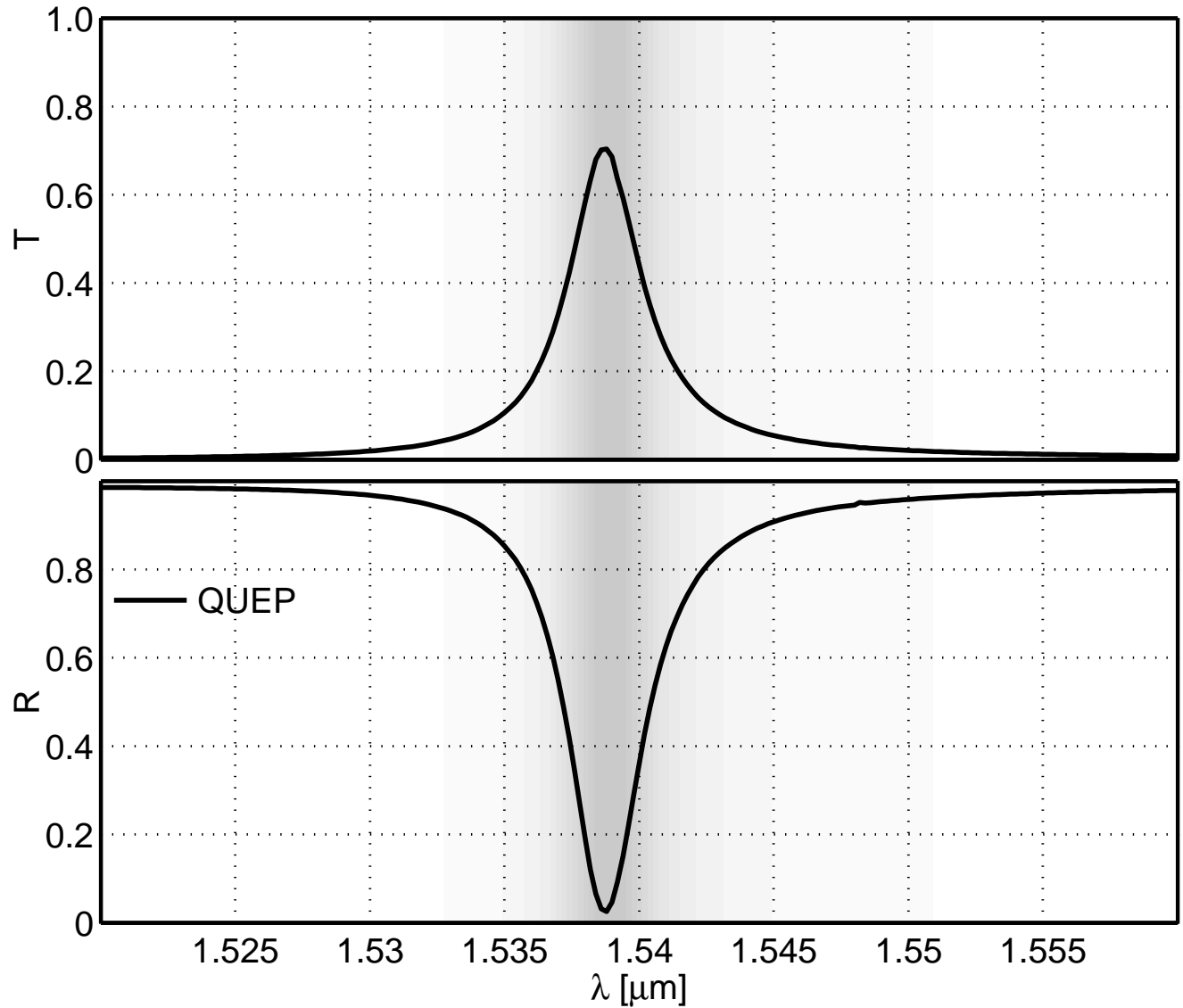
$$(n_s, n_f, n_c) = (1.45, 3.4, 1.0),$$

$$t = 0.22 \mu\text{m}, \Lambda = 0.31 \mu\text{m},$$

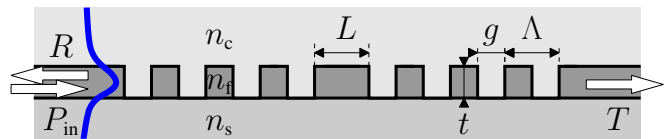
$$g = 0.135 \mu\text{m},$$

$$L = 1.515 \mu\text{m}.$$

QUEP - reference.



# Defect cavity

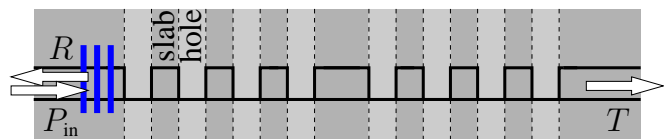


$$(n_s, n_f, n_c) = (1.45, 3.4, 1.0),$$

$$t = 0.22 \mu\text{m}, \Lambda = 0.31 \mu\text{m},$$

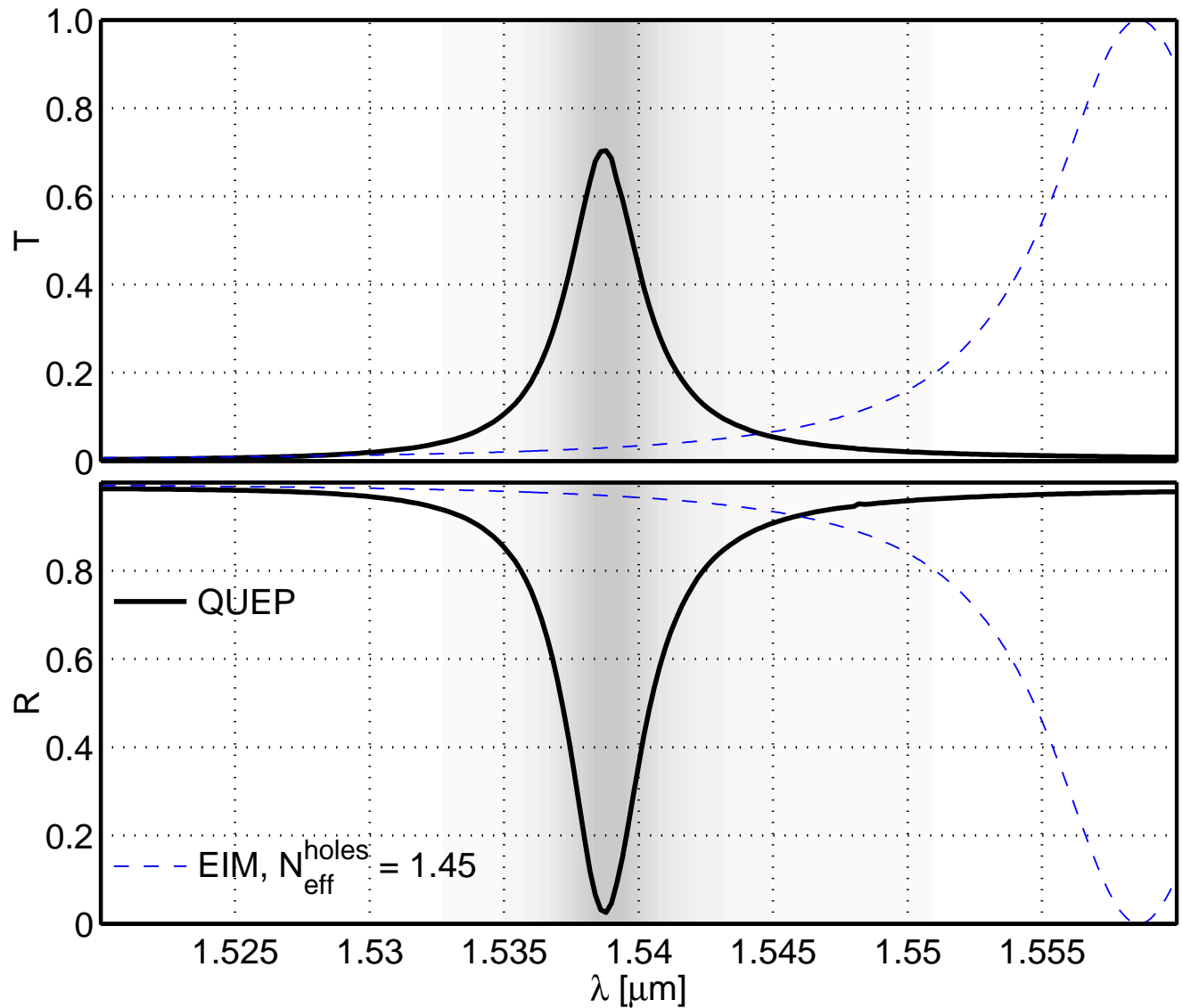
$$g = 0.135 \mu\text{m},$$

$$L = 1.515 \mu\text{m}.$$

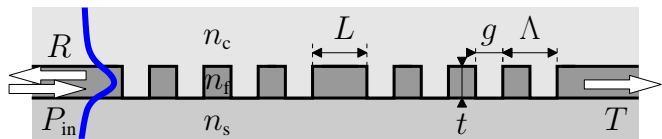


$$N_{\text{eff}}^{\text{slab}} \in [2.75, 2.77],$$

$$N_{\text{eff}}^{\text{holes}} = n_s = 1.45.$$



# Defect cavity

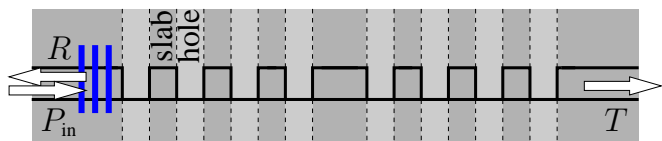


$$(n_s, n_f, n_c) = (1.45, 3.4, 1.0),$$

$$t = 0.22 \mu\text{m}, \Lambda = 0.31 \mu\text{m},$$

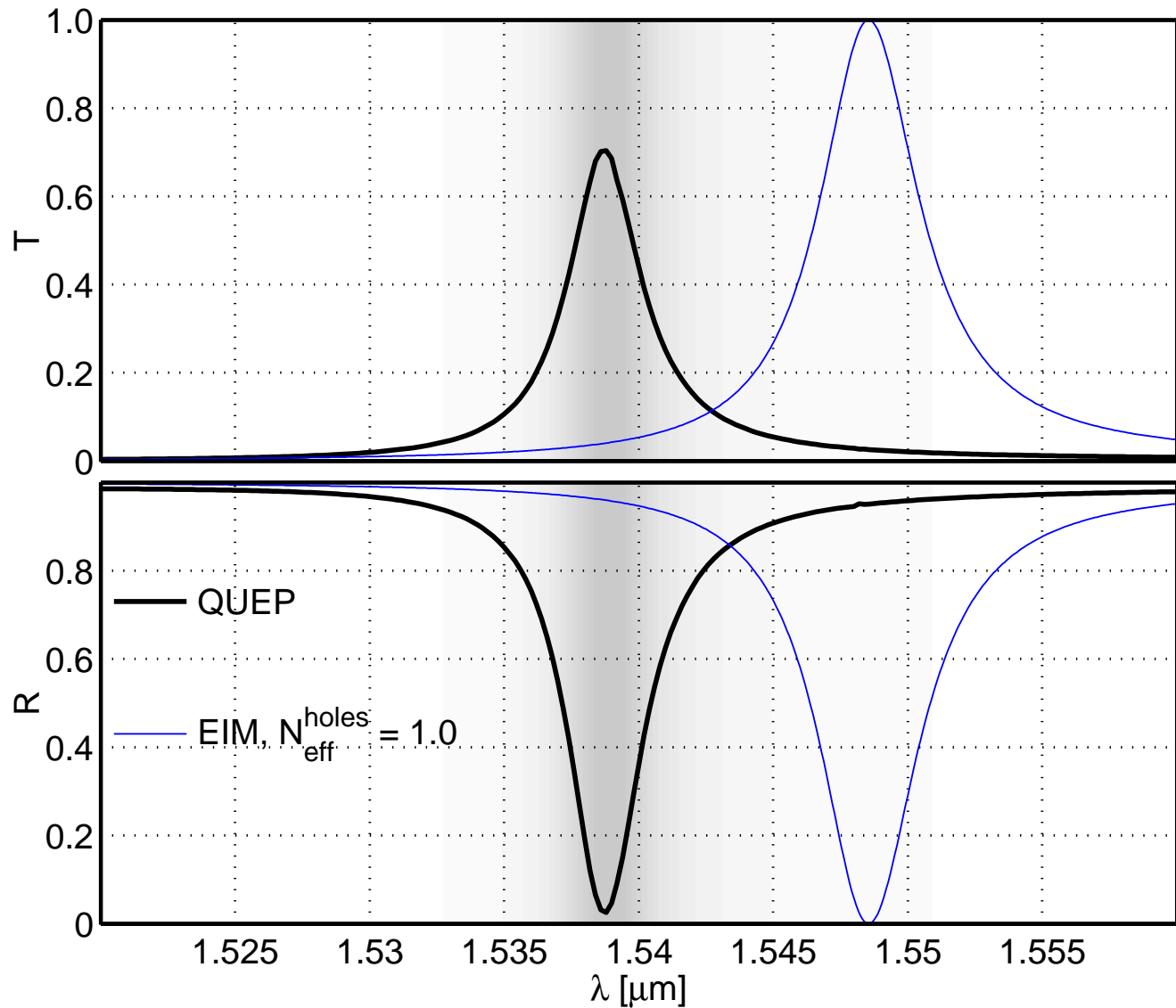
$$g = 0.135 \mu\text{m},$$

$$L = 1.515 \mu\text{m}.$$



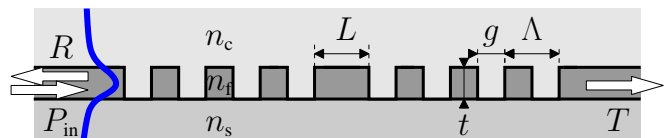
$$N_{\text{eff}}^{\text{slab}} \in [2.75, 2.77],$$

$$N_{\text{eff}}^{\text{holes}} = n_c = 1.0.$$





# Defect cavity

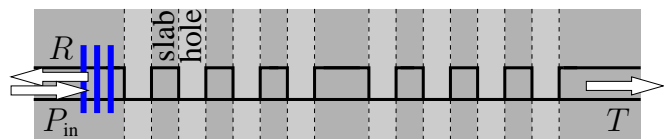


$$(n_s, n_f, n_c) = (1.45, 3.4, 1.0),$$

$$t = 0.22 \mu\text{m}, \Lambda = 0.31 \mu\text{m},$$

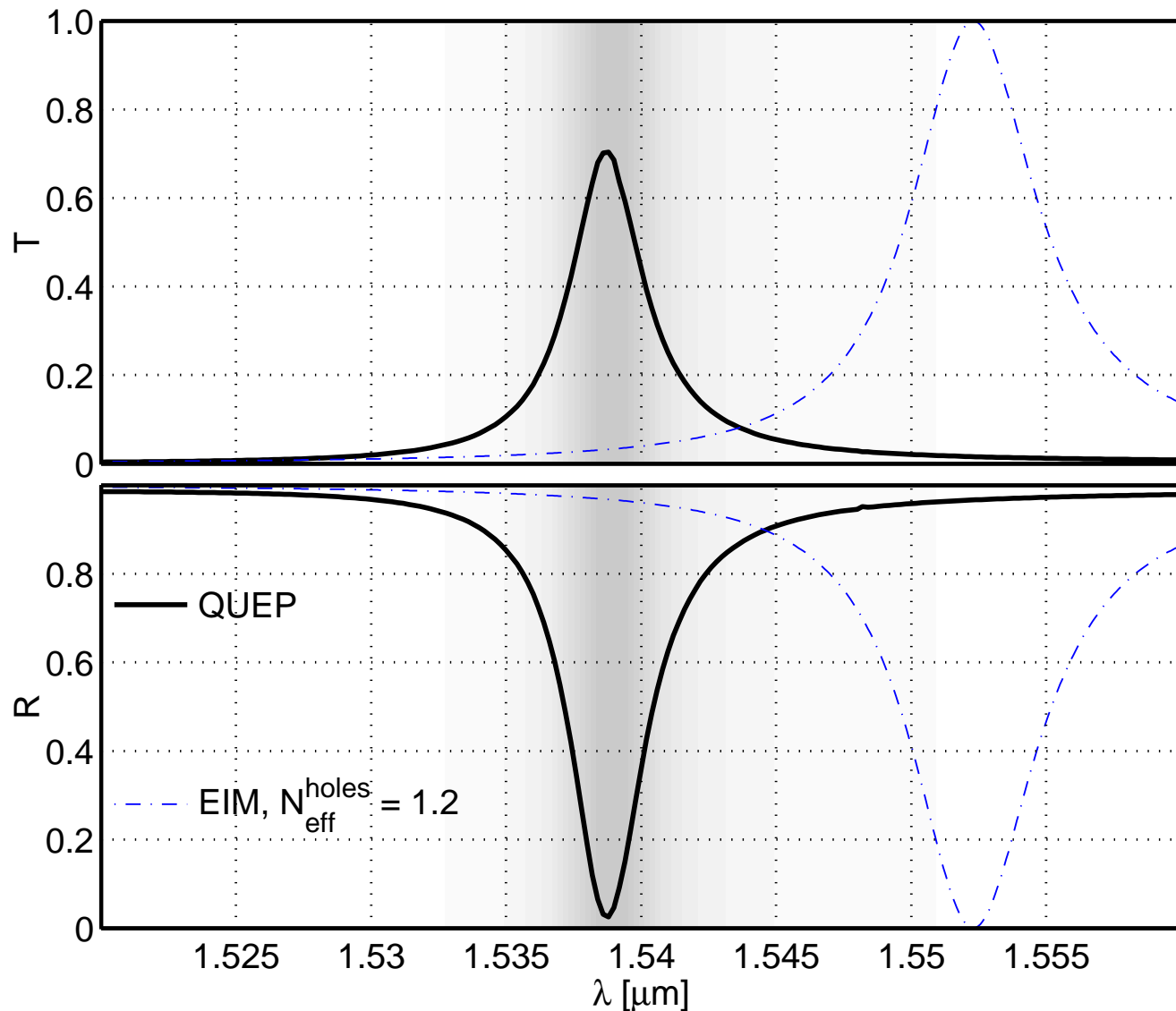
$$g = 0.135 \mu\text{m},$$

$$L = 1.515 \mu\text{m}.$$

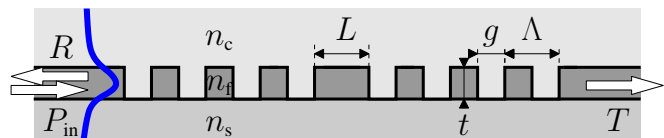


$$N_{\text{eff}}^{\text{slab}} \in [2.75, 2.77],$$

$$n_c < N_{\text{eff}}^{\text{holes}} = 1.2 < n_s.$$



# Defect cavity

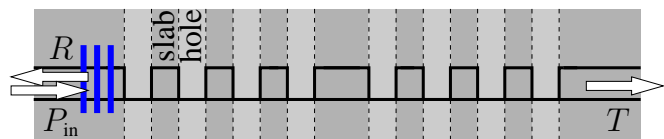


$$(n_s, n_f, n_c) = (1.45, 3.4, 1.0),$$

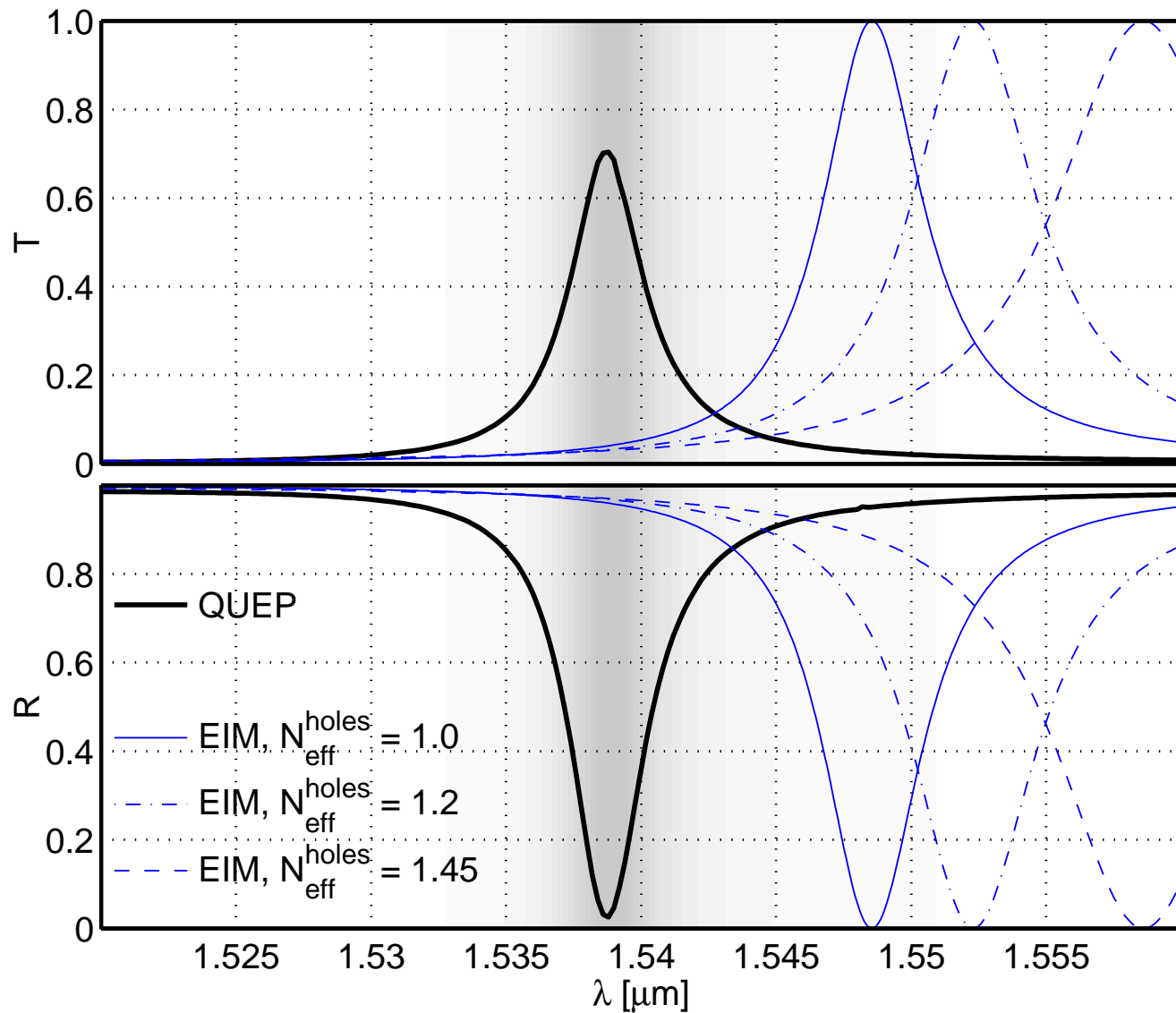
$$t = 0.22 \mu\text{m}, \Lambda = 0.31 \mu\text{m},$$

$$g = 0.135 \mu\text{m},$$

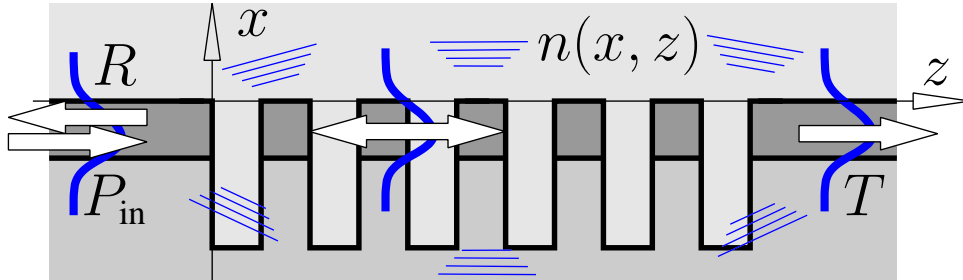
$$L = 1.515 \mu\text{m}.$$



$$N_{\text{eff}}^{\text{slab}} \in [2.75, 2.77].$$



## 2D propagation problems



2D, TE, frequency domain problems,  
vacuum wavelength  $\lambda = 2\pi/k$ ,  
permittivity  $\epsilon(x, z) = n^2(x, z)$ ,  
principal electric component  $E_y(x, z)$ .

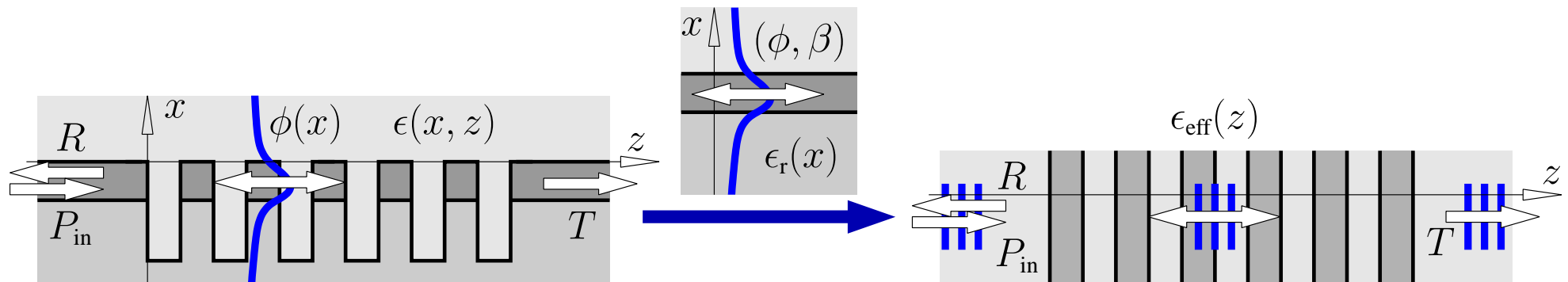
If the functional

$$\mathcal{H}(E_y) := \frac{1}{2} \iint_{\Omega} ((\partial_x E_y)^2 + (\partial_z E_y)^2 - k^2 \epsilon E_y^2) dx dz$$

is stationary for  $E_y$ , then  $E_y$  satisfies the Helmholtz equation

$$\partial_x^2 E_y + \partial_z^2 E_y + k^2 \epsilon E_y = 0, \quad (x, z) \in \Omega.$$

# Variational effective index approximation



Reference permittivity  $\epsilon_r(x)$  with guided mode  $\phi(x)$ , mode index  $\beta/k$ :

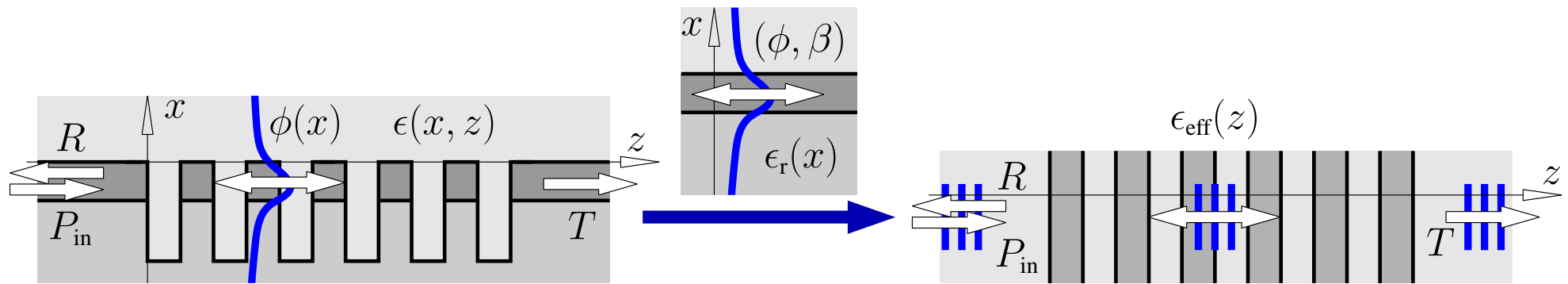
$$\partial_x^2 \phi + (k^2 \epsilon_r - \beta^2) \phi = 0.$$

Assumption:

$\phi$  constitutes a reasonable approximation for the vertical field shape on the entire horizontal axis,

$$E_y(x, z) = \psi(z) \phi(x), \quad \psi = ?$$

# Variational effective index approximation



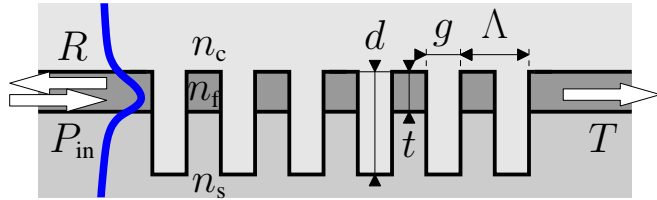
Restriction of  $\mathcal{H}$  to  $E_y(x, z) = \psi(z) \phi(x)$   $\rightsquigarrow$  stationarity condition

$$\partial_z^2 \psi + k^2 \epsilon_{\text{eff}}(z) \psi = 0$$

with effective permittivity

$$\epsilon_{\text{eff}}(z) = (\beta/k)^2 + \frac{\int (\epsilon(x, z) - \epsilon_r(x)) \phi^2(x) dx}{\int \phi^2(x) dx}, \quad \epsilon_{\text{eff}}(z) = N_{\text{eff}}^2(z).$$

# Deeply etched waveguide grating

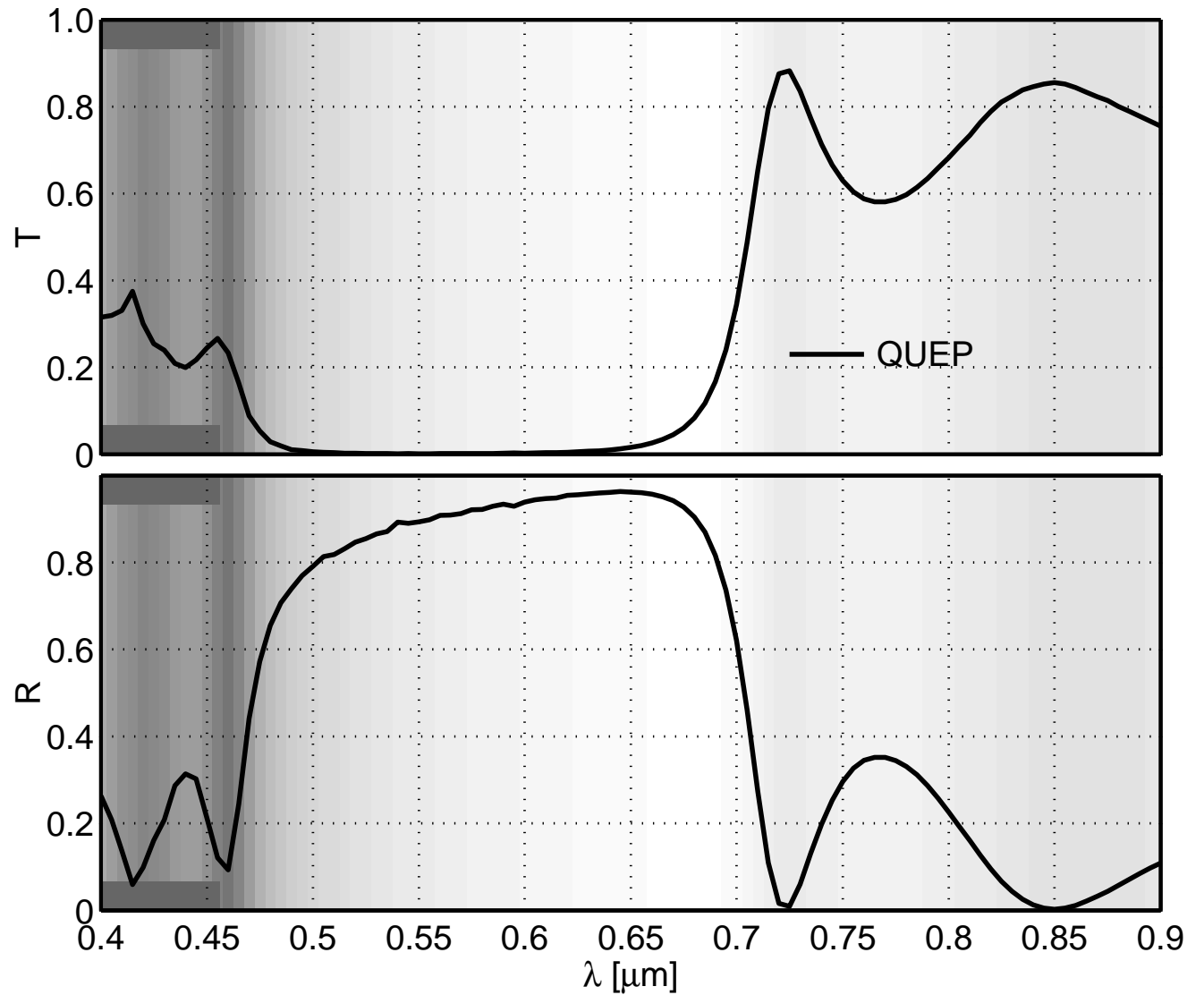


$$(n_s, n_f, n_c) = (1.45, 2.0, 1.0),$$

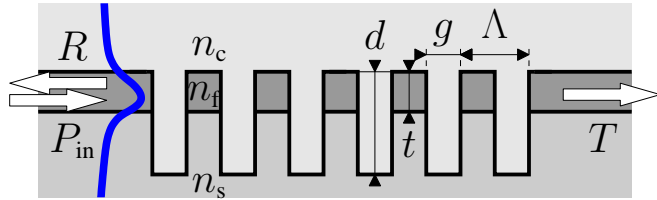
$$\Lambda = 0.21 \mu\text{m}, g = 0.11 \mu\text{m},$$

$$d = 0.6 \mu\text{m}, t = 0.2 \mu\text{m}.$$

QUEP - reference.



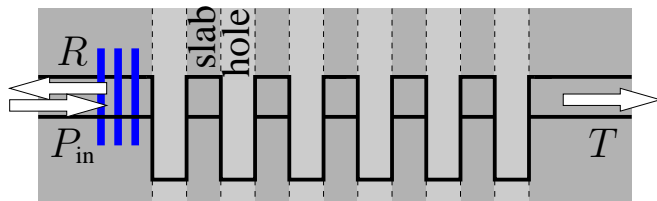
# Deeply etched waveguide grating



$$(n_s, n_f, n_c) = (1.45, 2.0, 1.0),$$

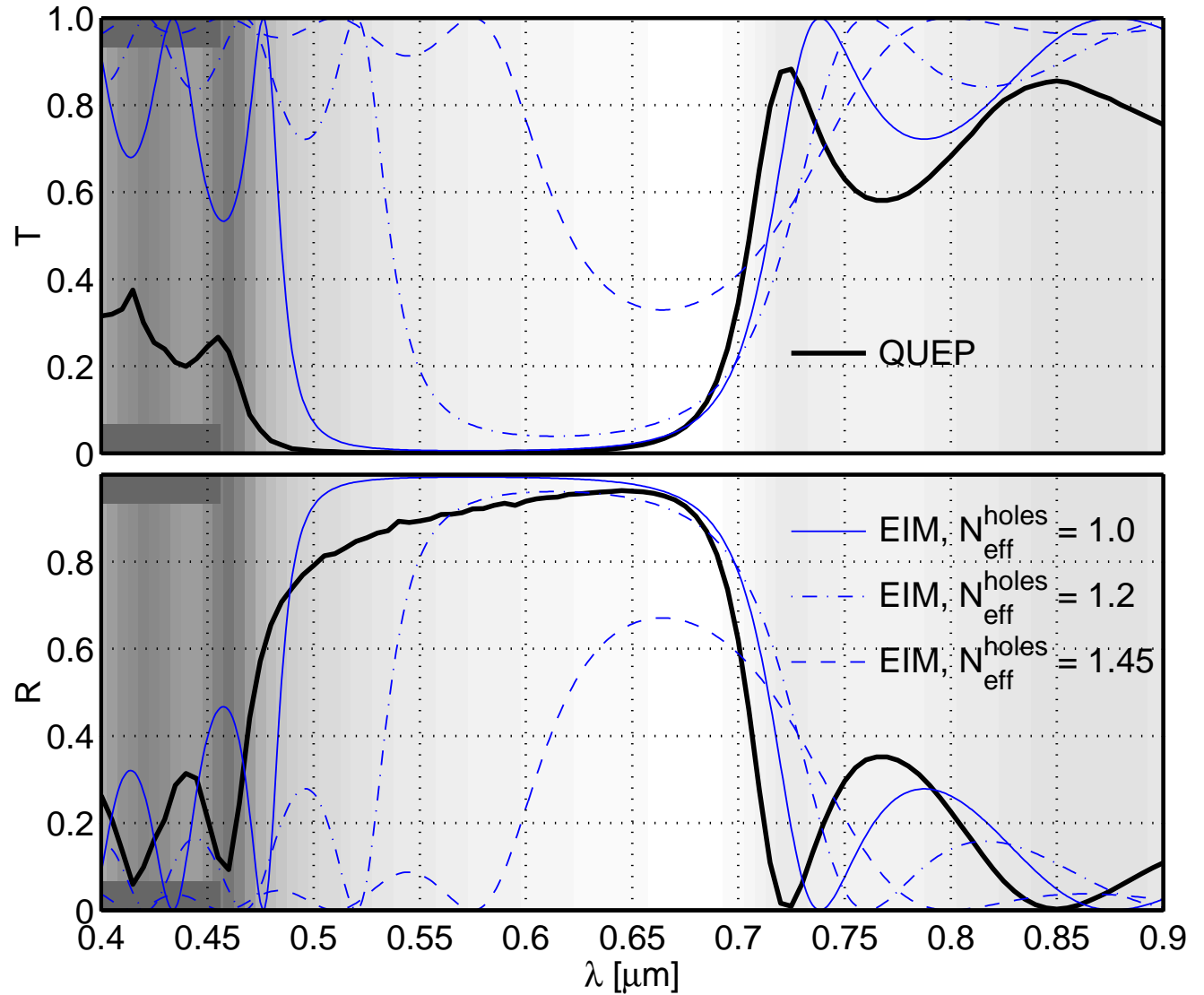
$$\Lambda = 0.21 \mu\text{m}, g = 0.11 \mu\text{m},$$

$$d = 0.6 \mu\text{m}, t = 0.2 \mu\text{m}.$$

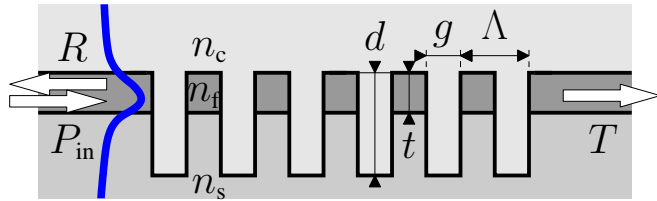


$$N_{\text{eff}}^{\text{slab}} \in [1.67, 1.87],$$

$$N_{\text{eff}}^{\text{holes}} = 1.0, 1.2, 1.45 \text{ (EIM)}.$$



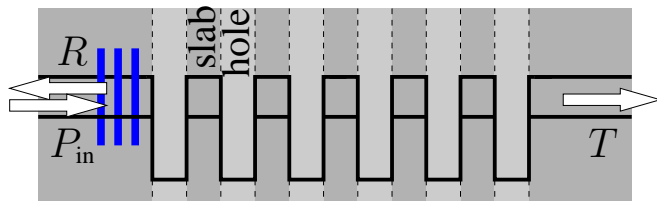
# Deeply etched waveguide grating



$$(n_s, n_f, n_c) = (1.45, 2.0, 1.0),$$

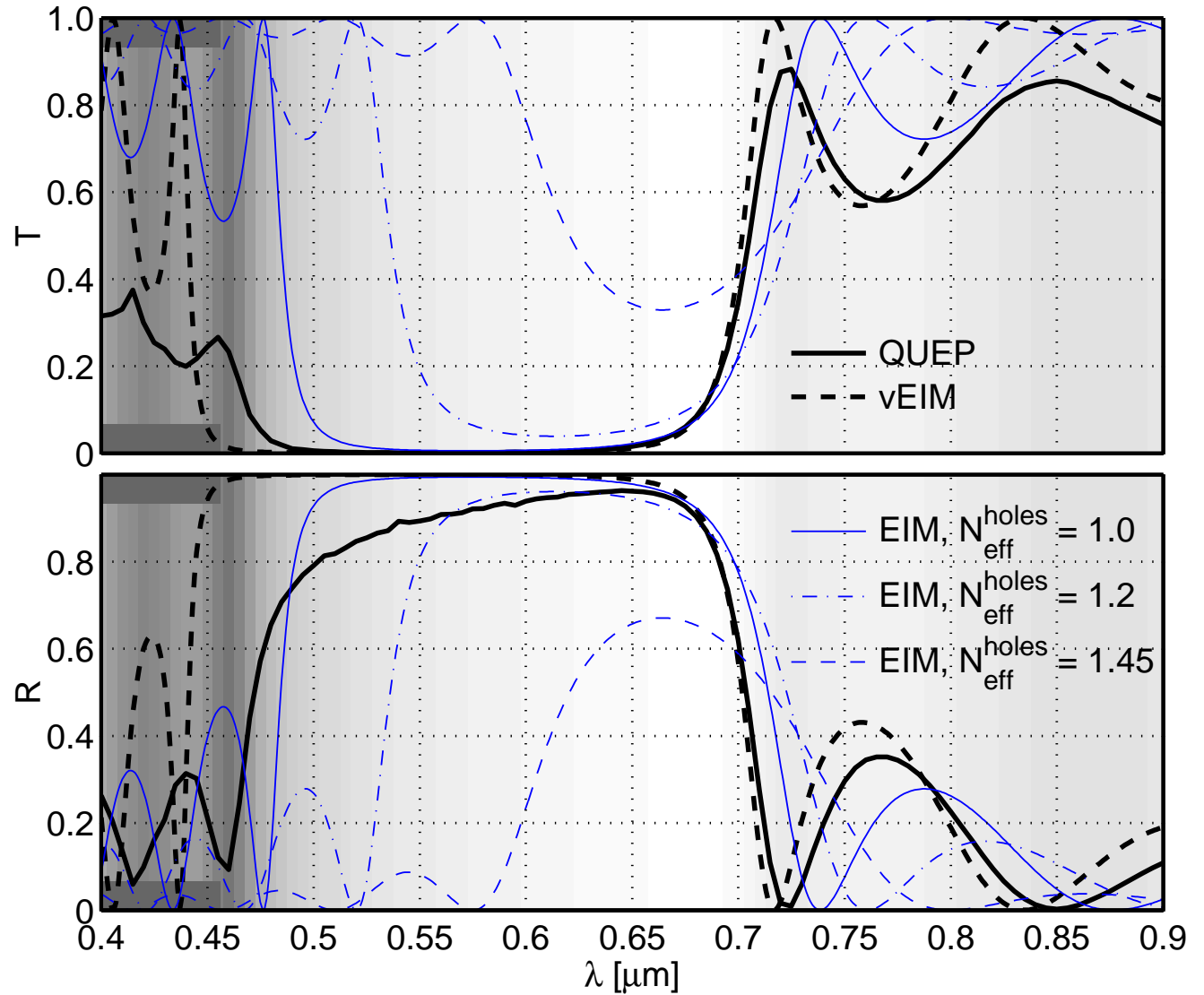
$$\Lambda = 0.21 \mu\text{m}, g = 0.11 \mu\text{m},$$

$$d = 0.6 \mu\text{m}, t = 0.2 \mu\text{m}.$$



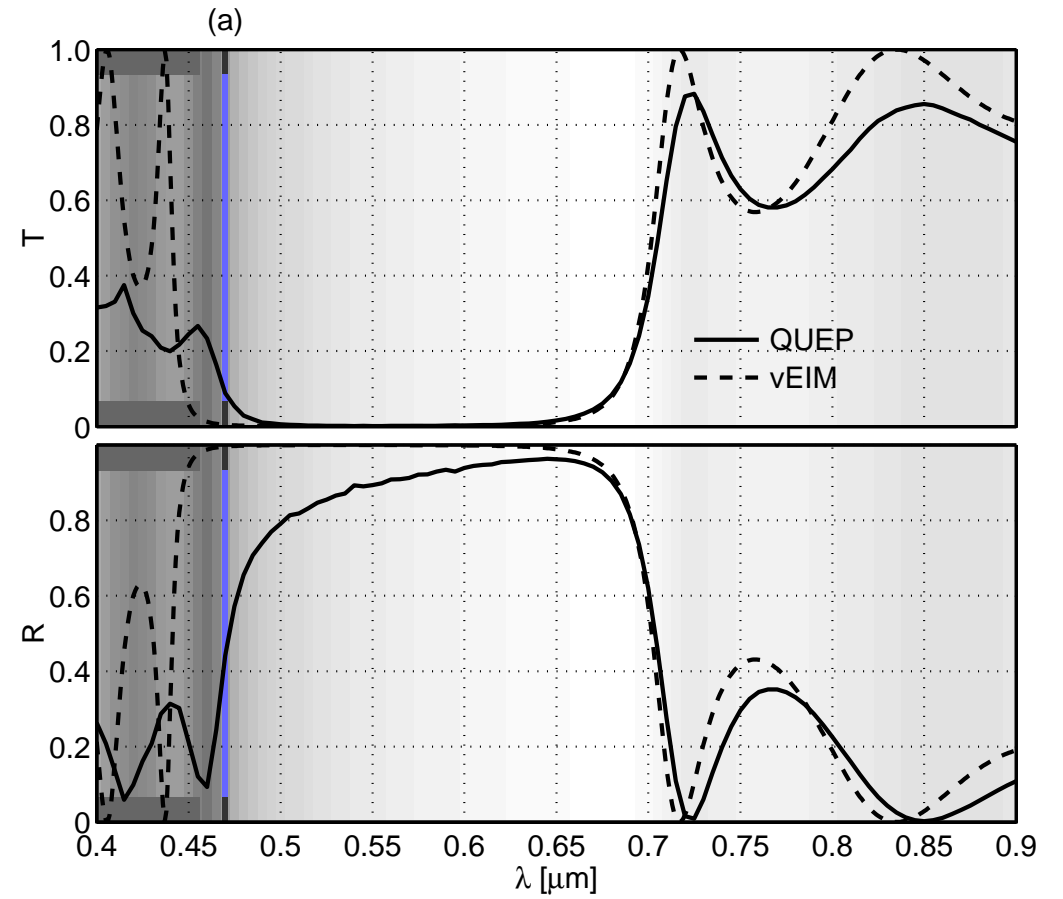
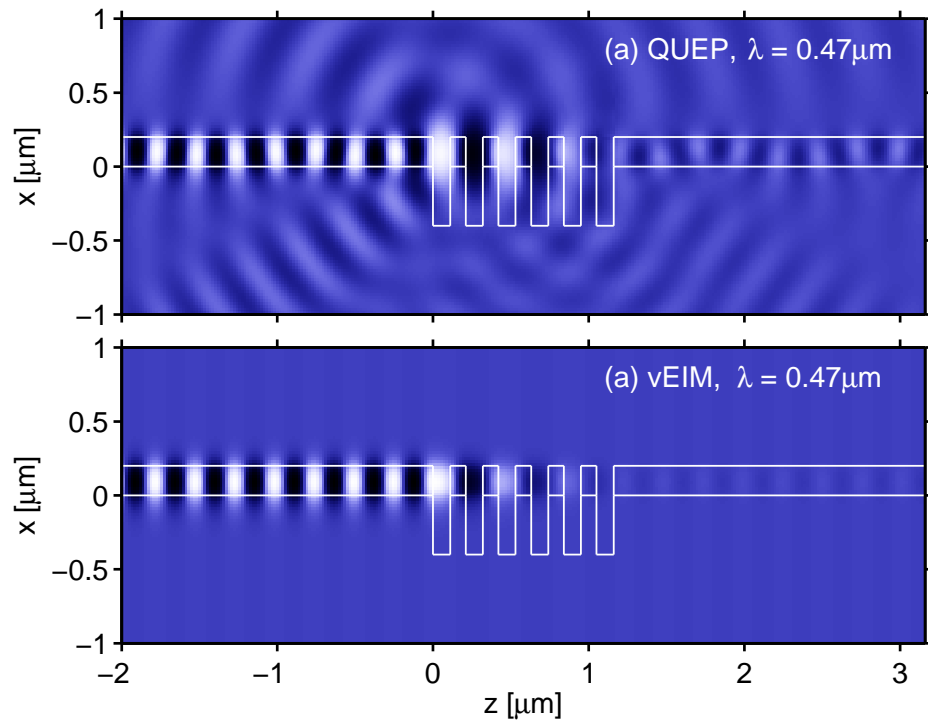
$$N_{\text{eff}}^{\text{slab}} \in [1.67, 1.87],$$

$$N_{\text{eff}}^{\text{holes}} \in [0.71, 0.82] \text{ (vEIM)}.$$

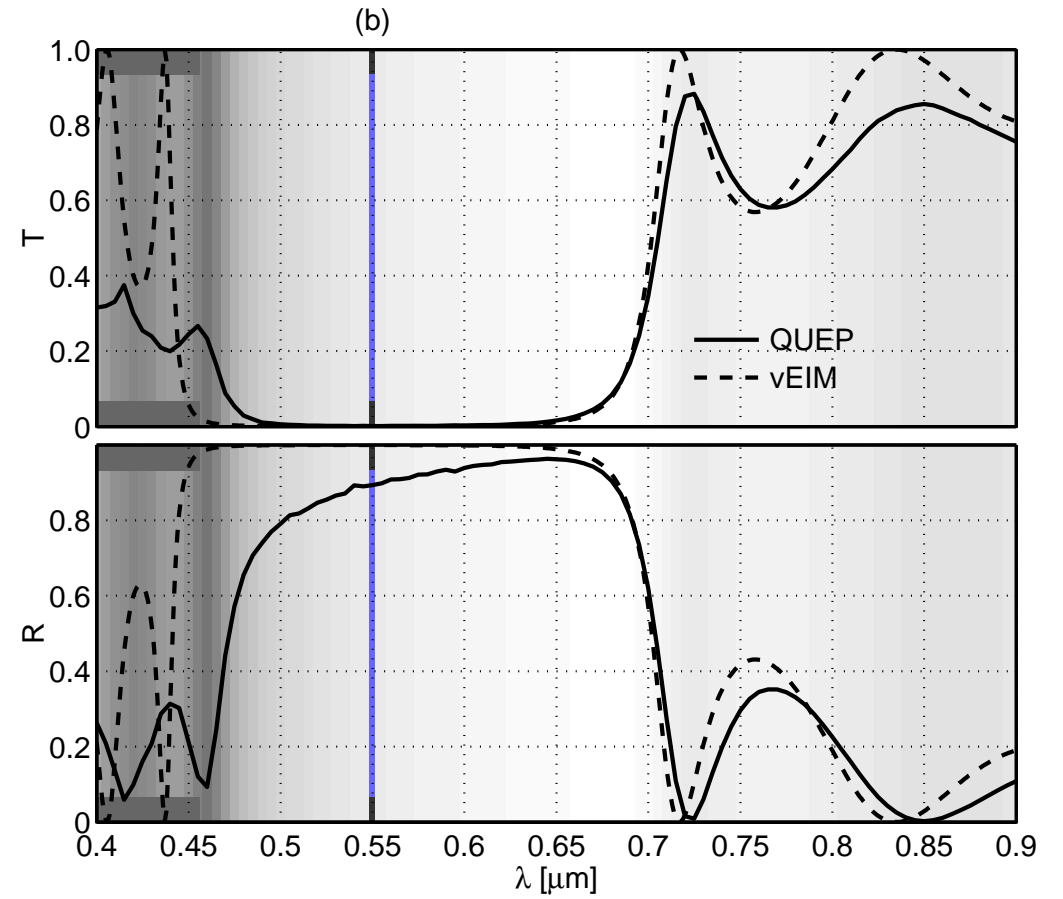
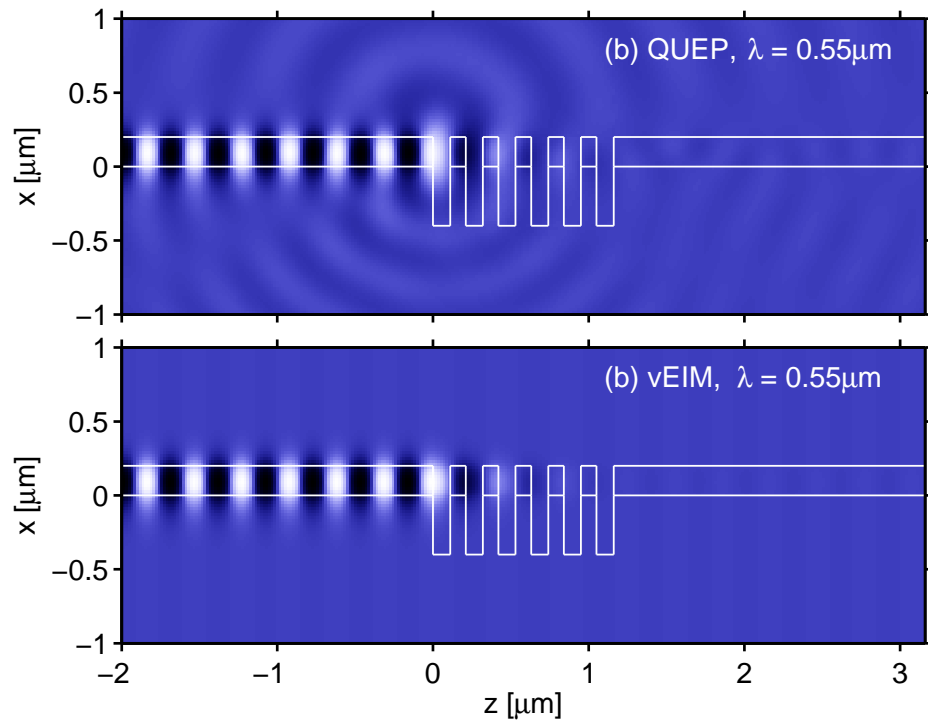




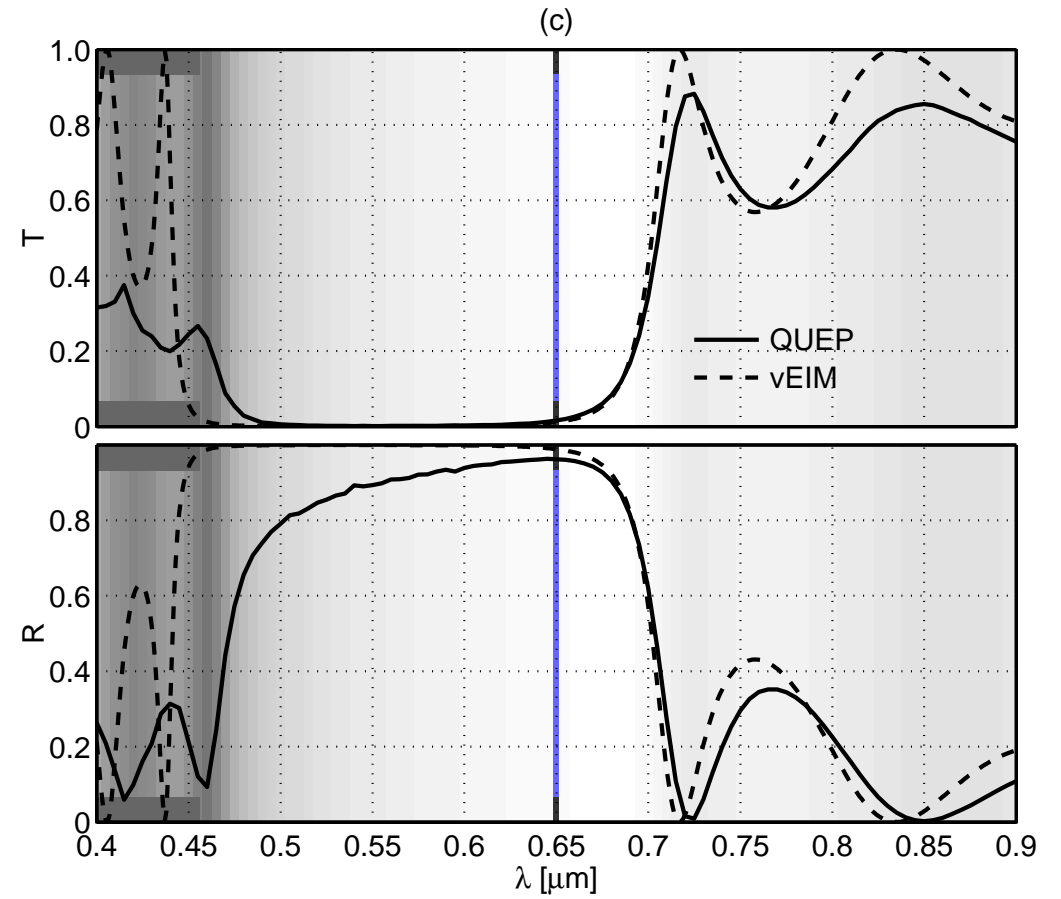
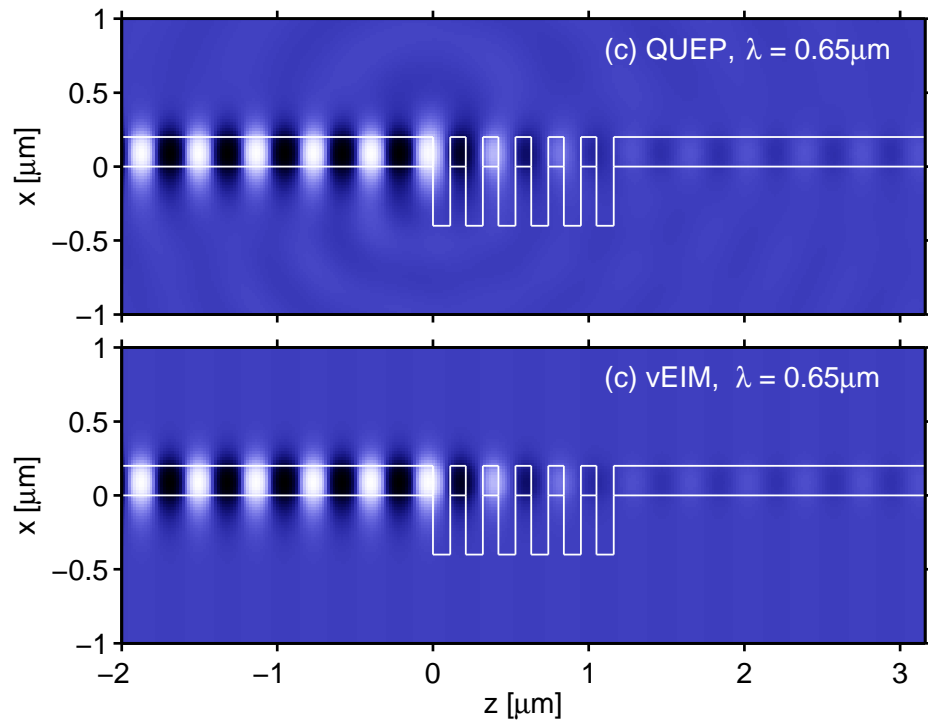
# Deeply etched waveguide grating, fields



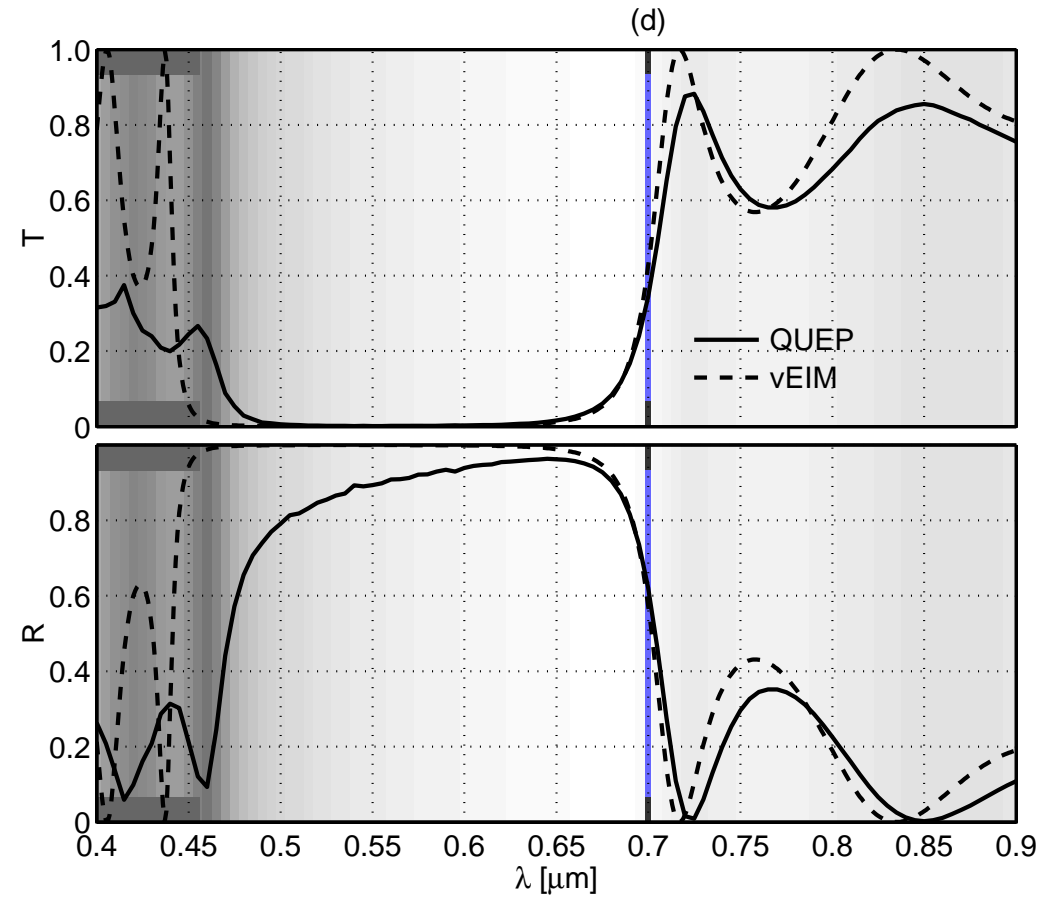
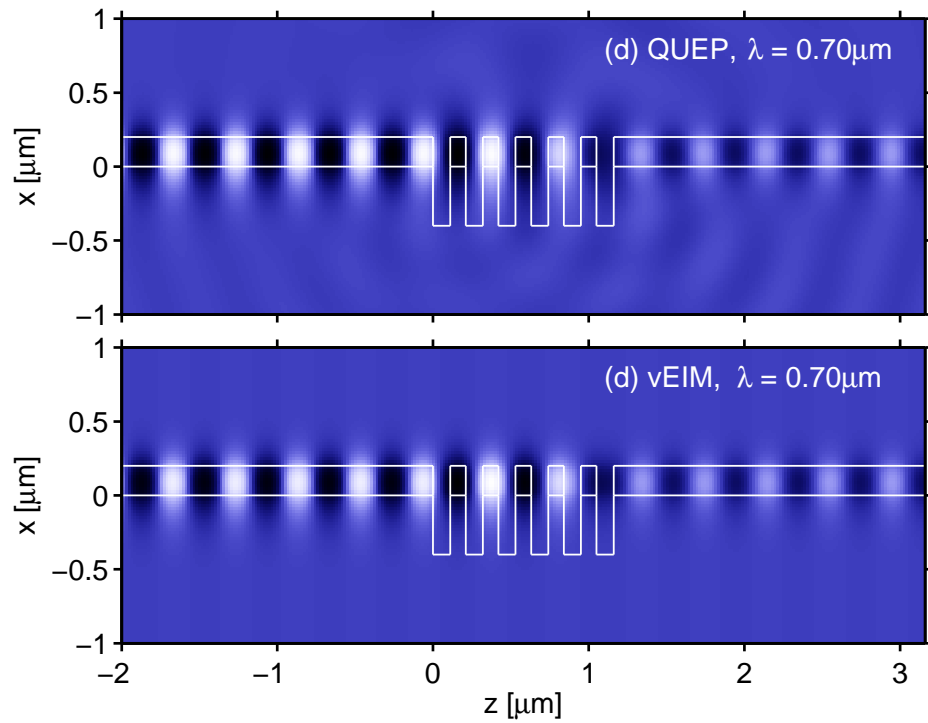
# Deeply etched waveguide grating, fields



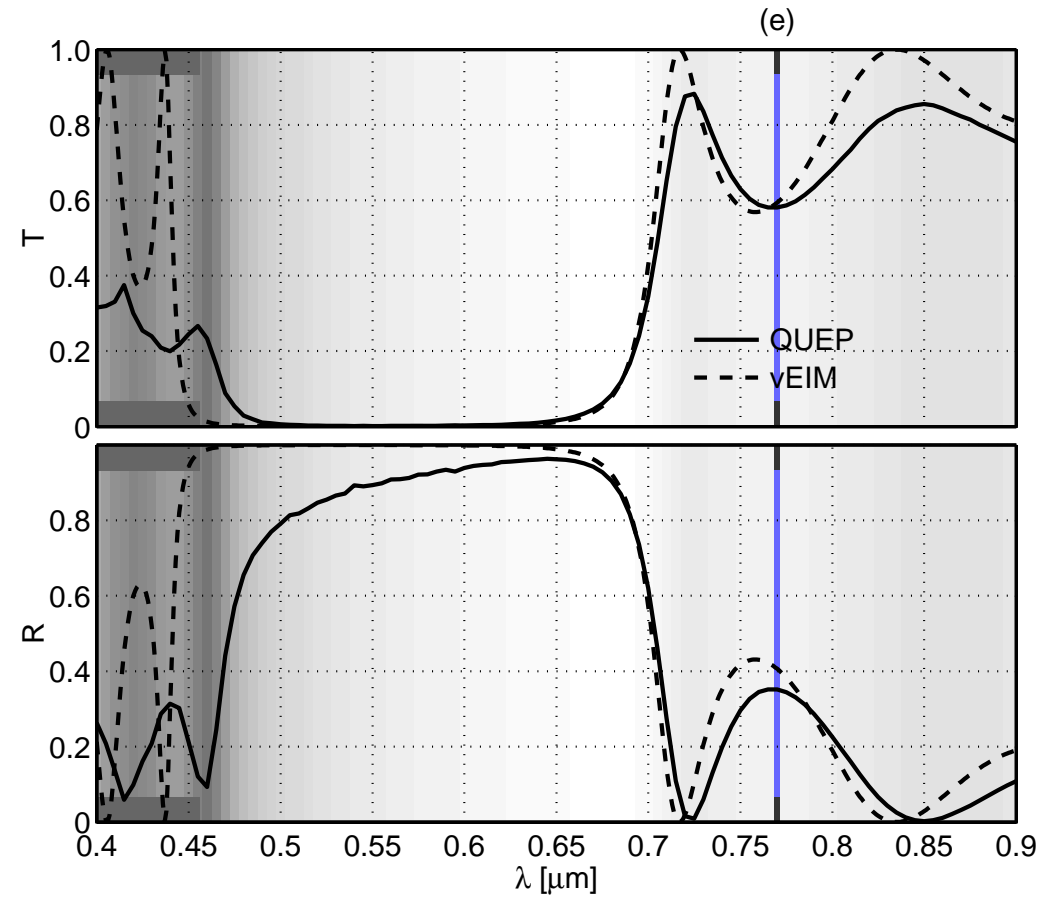
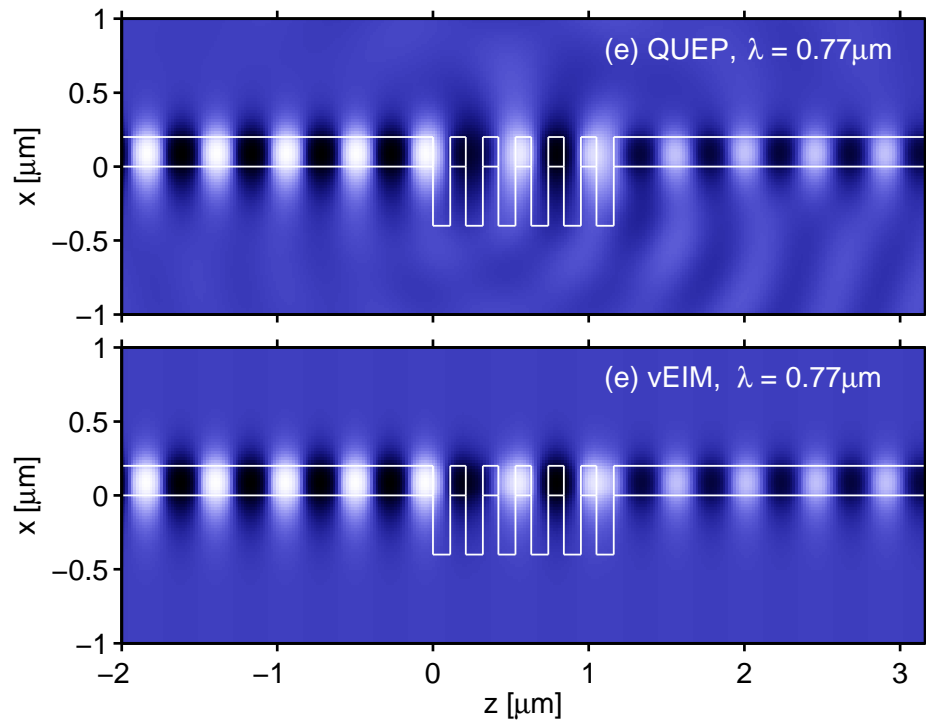
# Deeply etched waveguide grating, fields



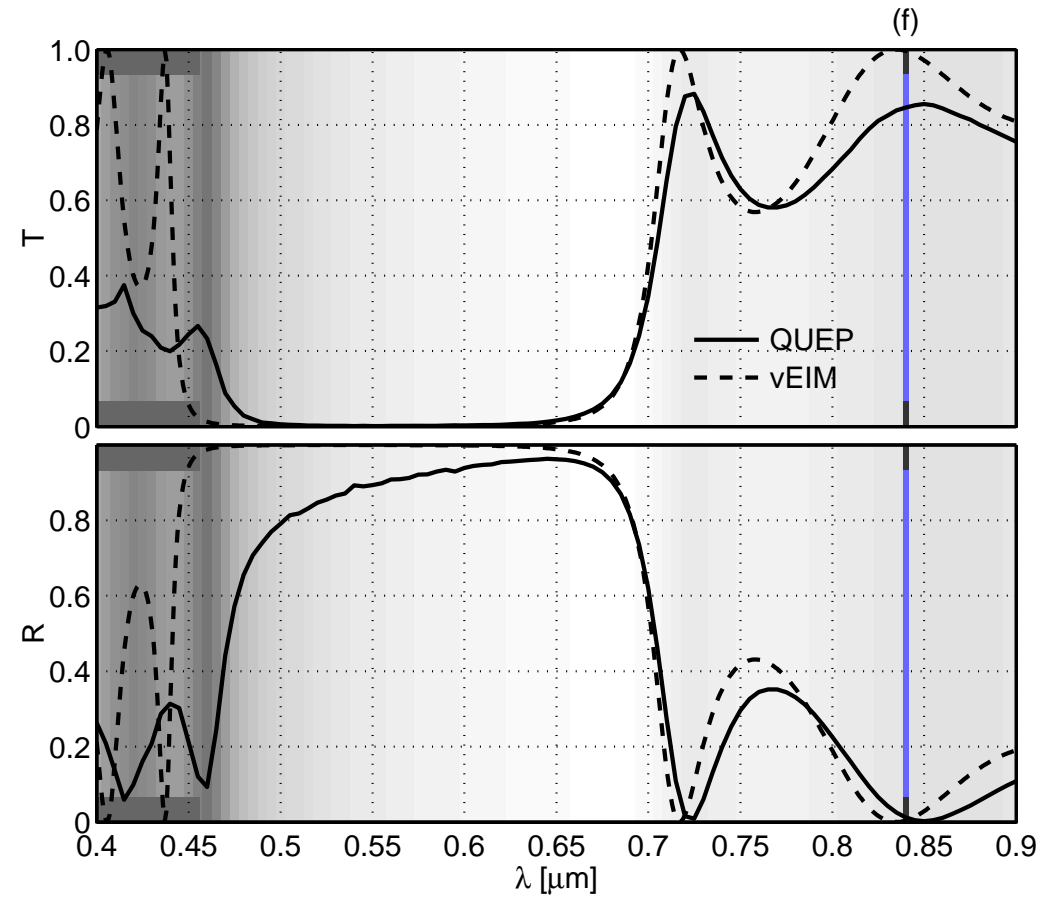
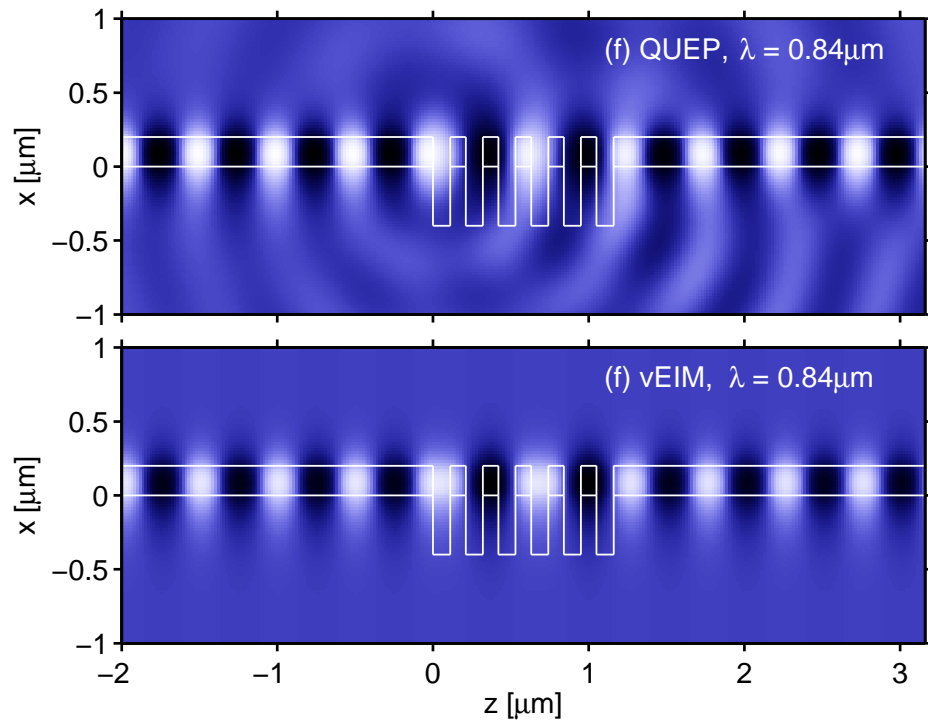
# Deeply etched waveguide grating, fields



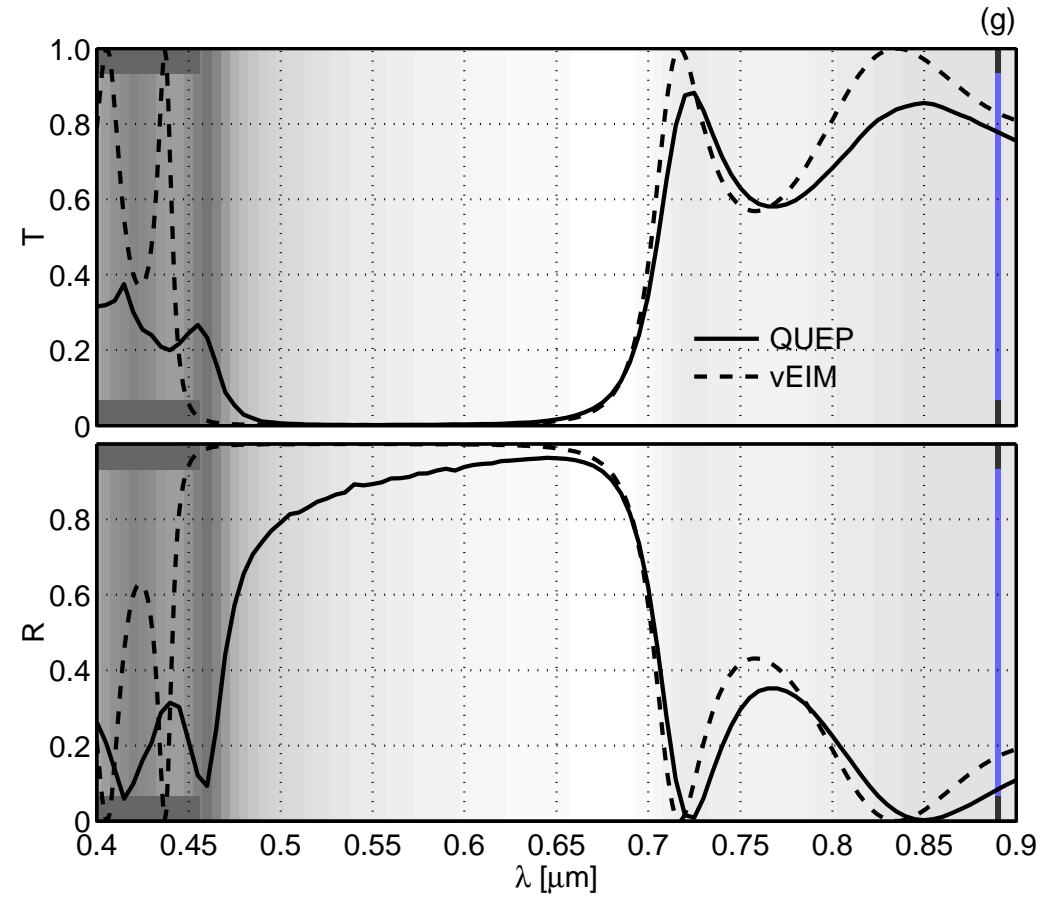
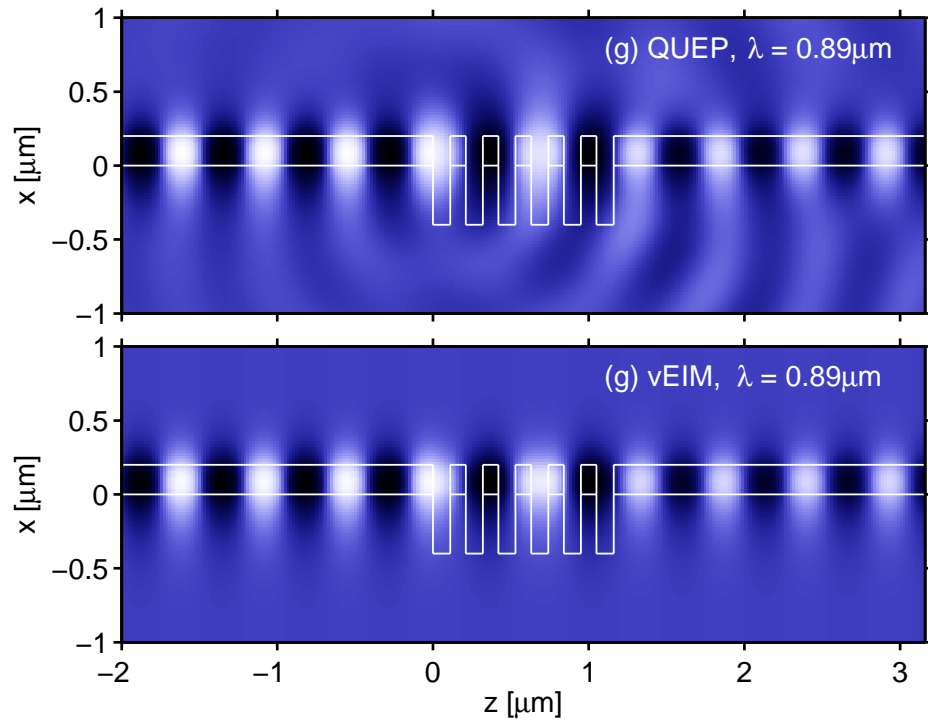
# Deeply etched waveguide grating, fields



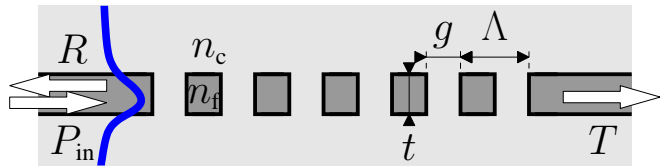
# Deeply etched waveguide grating, fields



# Deeply etched waveguide grating, fields



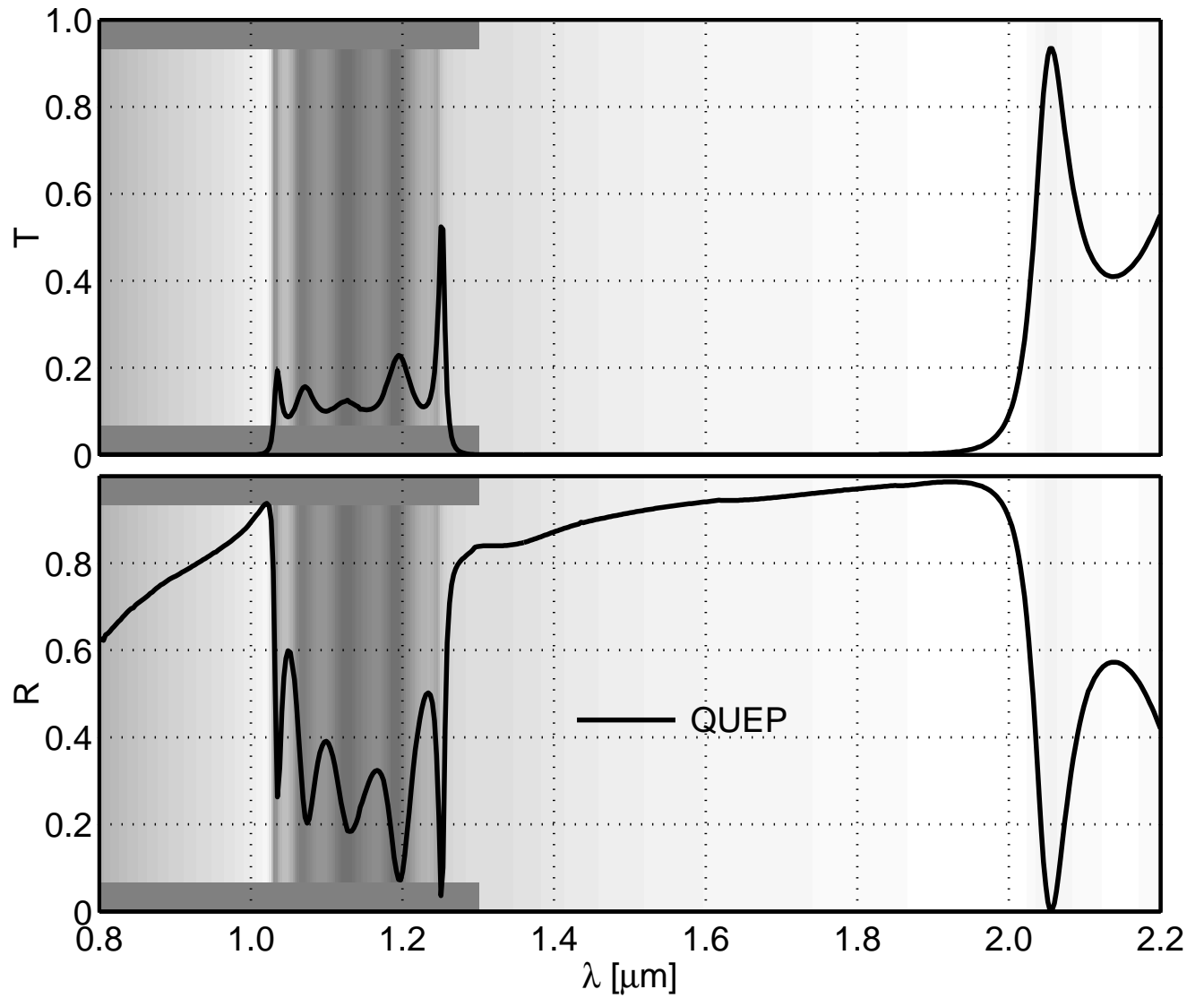
# High contrast PC membrane



$$(n_c, n_f, n_c) = (1.0, 3.4, 1.0),$$

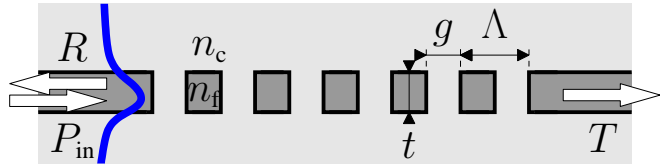
$$\Lambda = 0.45 \mu\text{m}, g = 0.225 \mu\text{m},$$
$$t = 0.2 \mu\text{m}.$$

QUEP - reference.





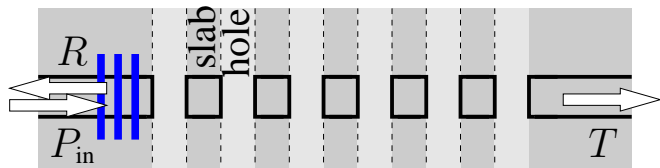
# High contrast PC membrane



$$(n_c, n_f, n_c) = (1.0, 3.4, 1.0),$$

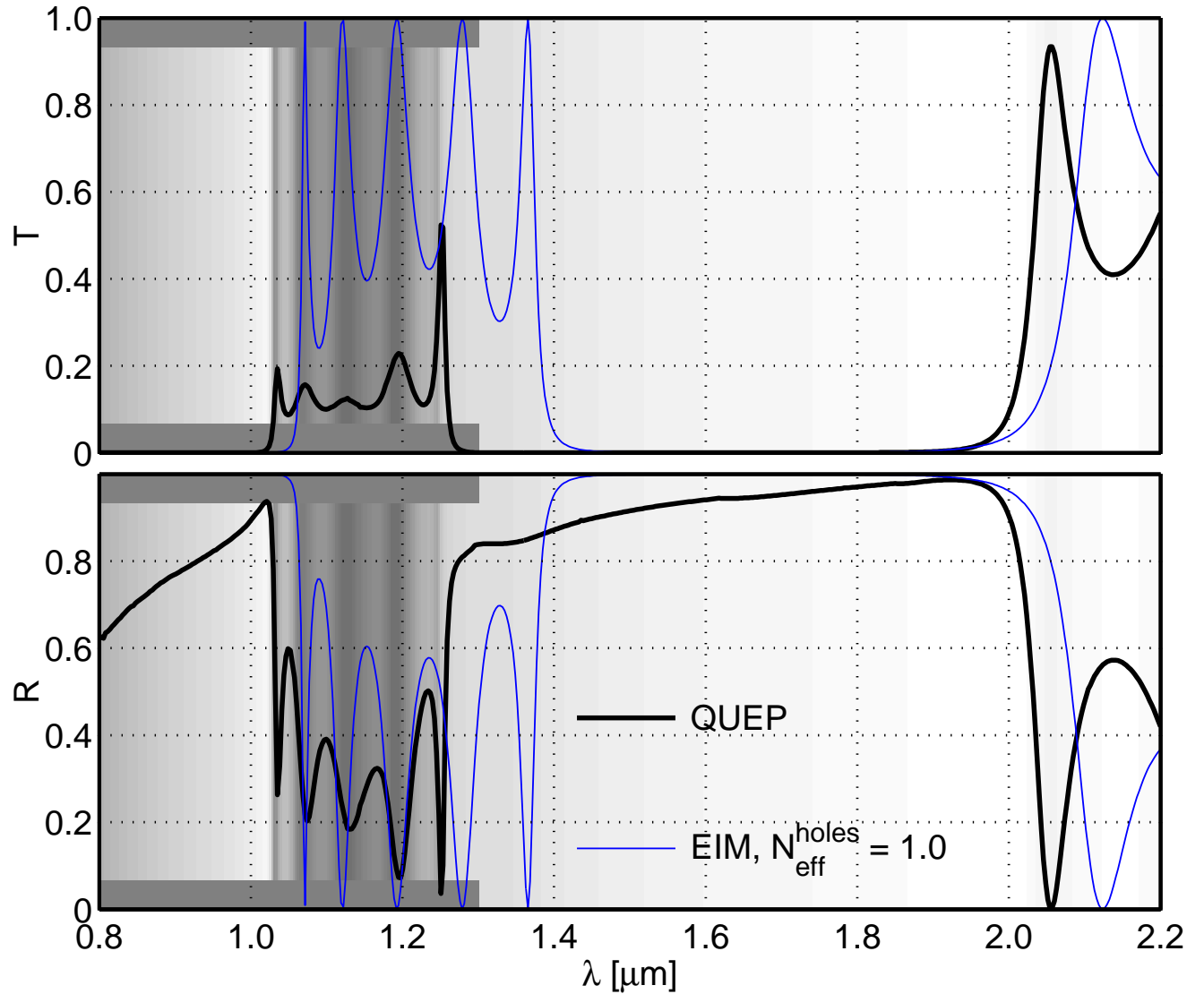
$$\Lambda = 0.45 \mu\text{m}, g = 0.225 \mu\text{m},$$

$$t = 0.2 \mu\text{m}.$$

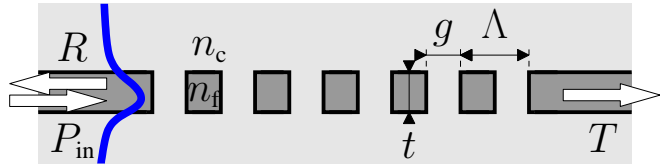


$$N_{\text{eff}}^{\text{slab}} \in [2.33, 3.09],$$

$$N_{\text{eff}}^{\text{holes}} = n_c = 1.0 \text{ (EIM)}.$$



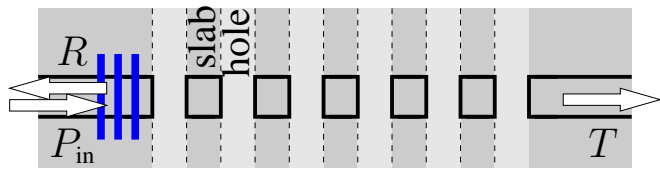
# High contrast PC membrane



$$(n_c, n_f, n_c) = (1.0, 3.4, 1.0),$$

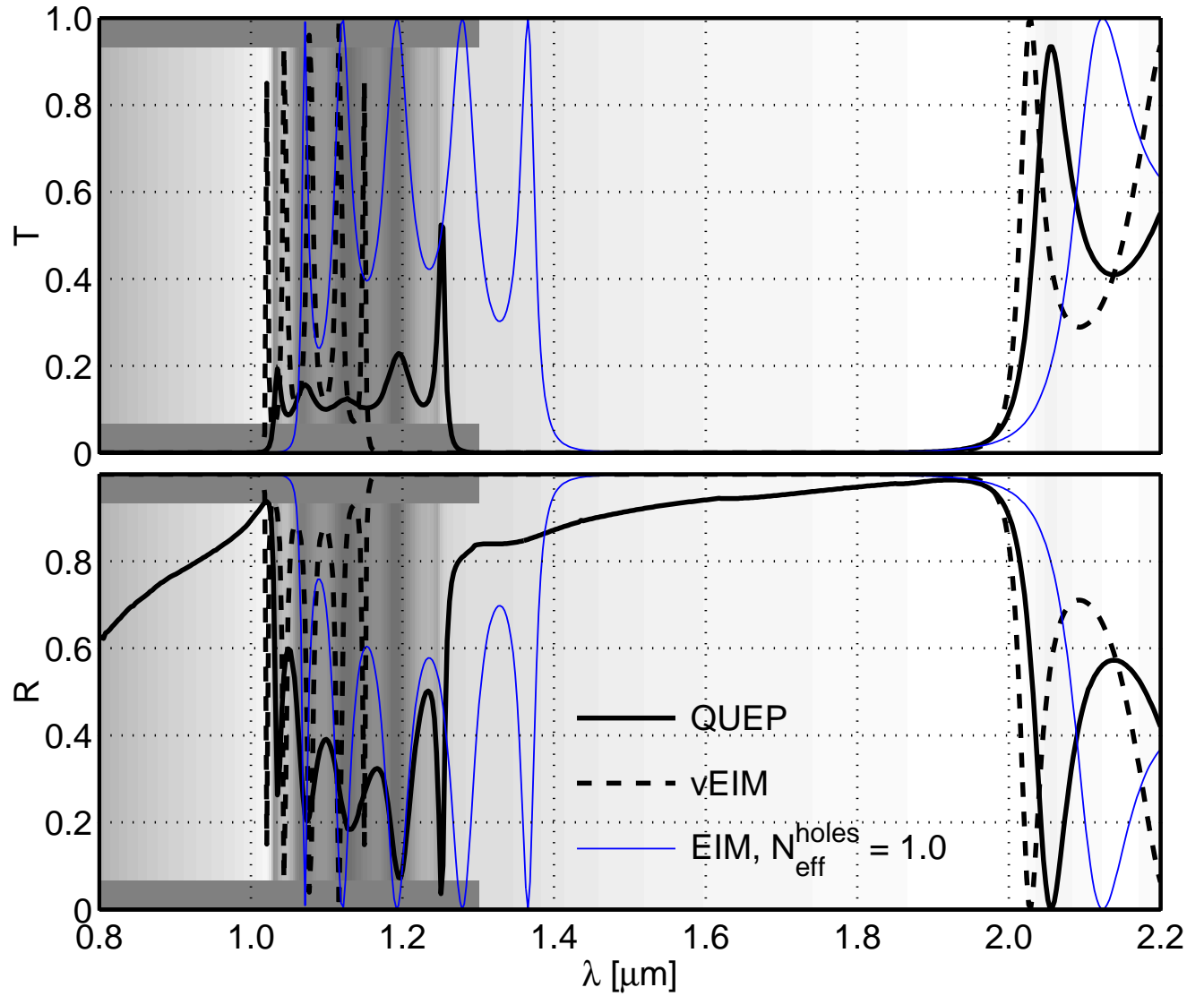
$$\Lambda = 0.45 \mu\text{m}, g = 0.225 \mu\text{m},$$

$$t = 0.2 \mu\text{m}.$$

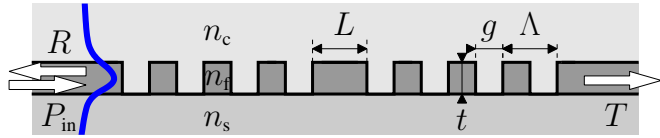


$$N_{\text{eff}}^{\text{slab}} \in [2.33, 3.09],$$

$$\epsilon_{\text{eff}}^{\text{holes}} \in [-1.30, -0.41] \text{ (vEIM)}.$$



# Defect cavity



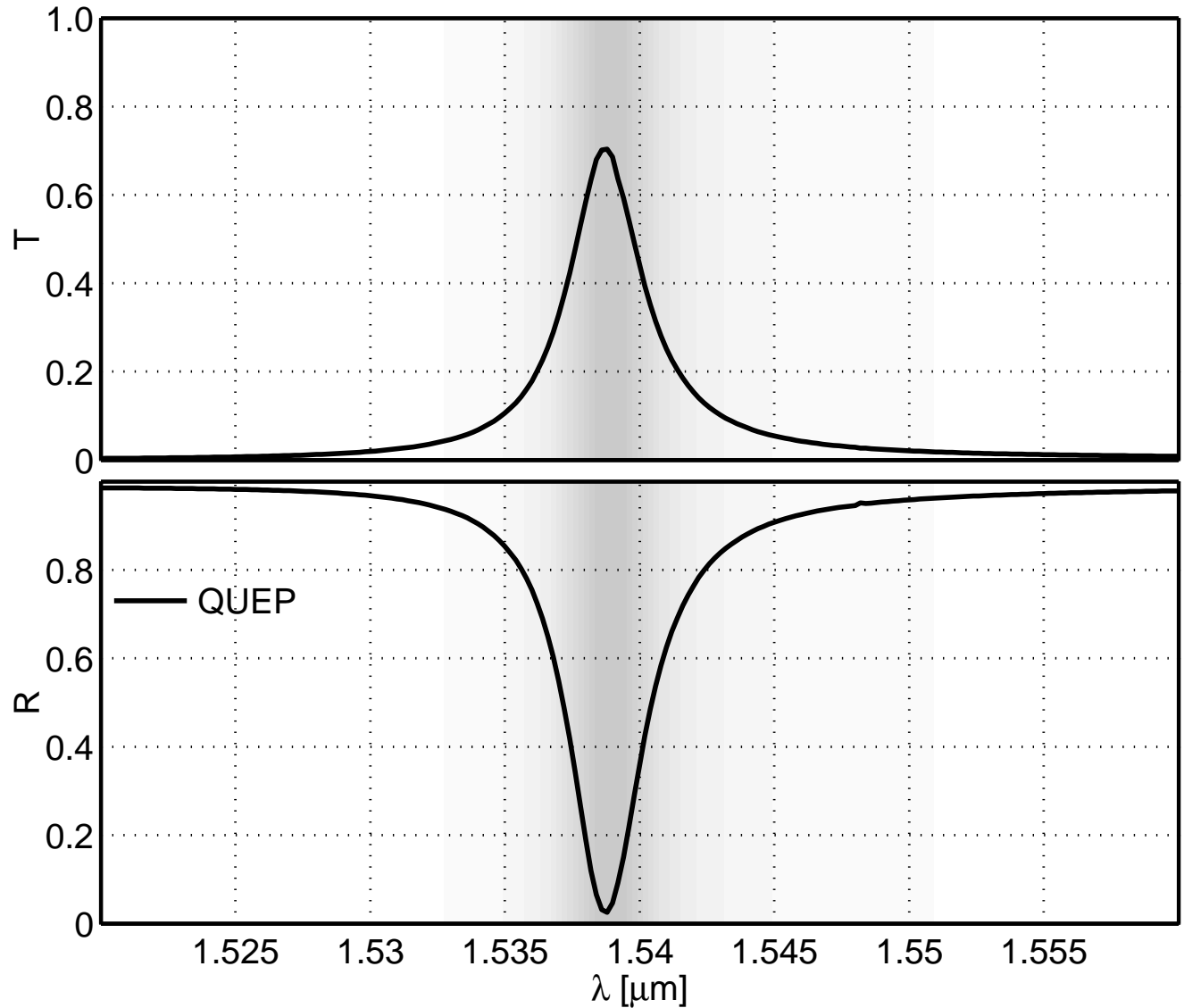
$$(n_s, n_f, n_c) = (1.45, 3.4, 1.0),$$

$$t = 0.22 \mu\text{m}, \Lambda = 0.31 \mu\text{m},$$

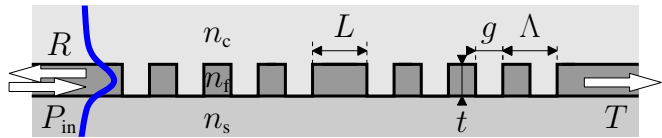
$$g = 0.135 \mu\text{m},$$

$$L = 1.515 \mu\text{m}.$$

QUEP - reference.



# Defect cavity

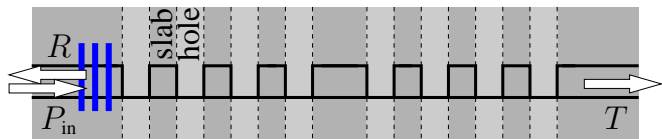


$$(n_s, n_f, n_c) = (1.45, 3.4, 1.0),$$

$$t = 0.22 \mu\text{m}, \Lambda = 0.31 \mu\text{m},$$

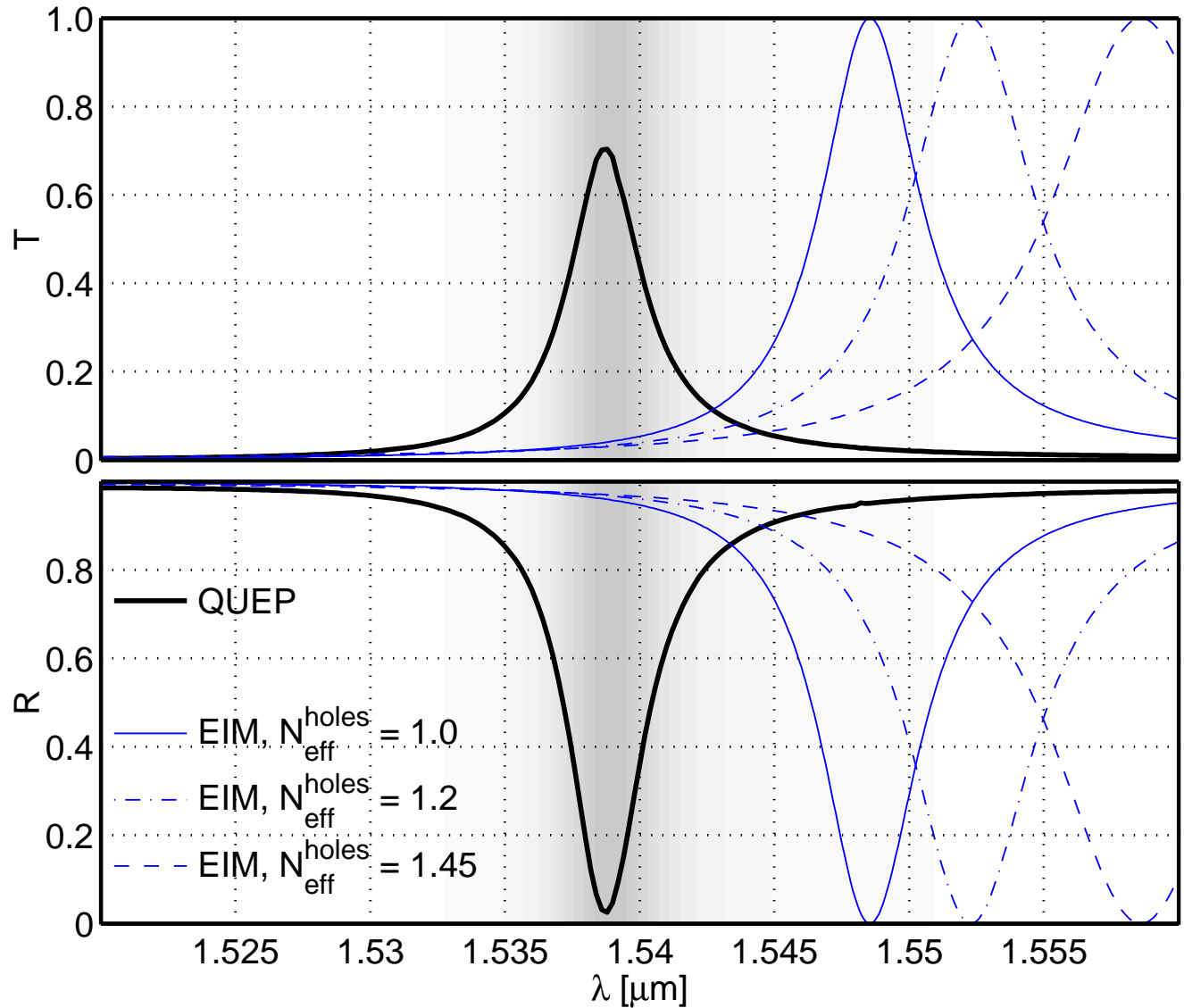
$$g = 0.135 \mu\text{m},$$

$$L = 1.515 \mu\text{m}.$$

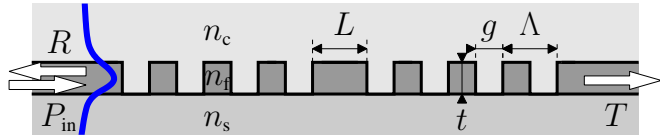


$$N_{\text{eff}}^{\text{slab}} \in [2.75, 2.77],$$

$$N_{\text{eff}}^{\text{holes}} = (1.0, 1.2, 1.45) \text{ (EIM)}.$$



# Defect cavity

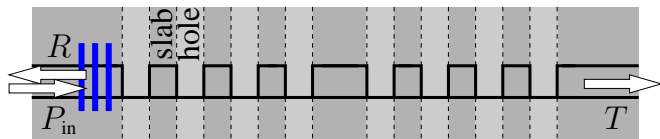


$$(n_s, n_f, n_c) = (1.45, 3.4, 1.0),$$

$$t = 0.22 \mu\text{m}, \Lambda = 0.31 \mu\text{m},$$

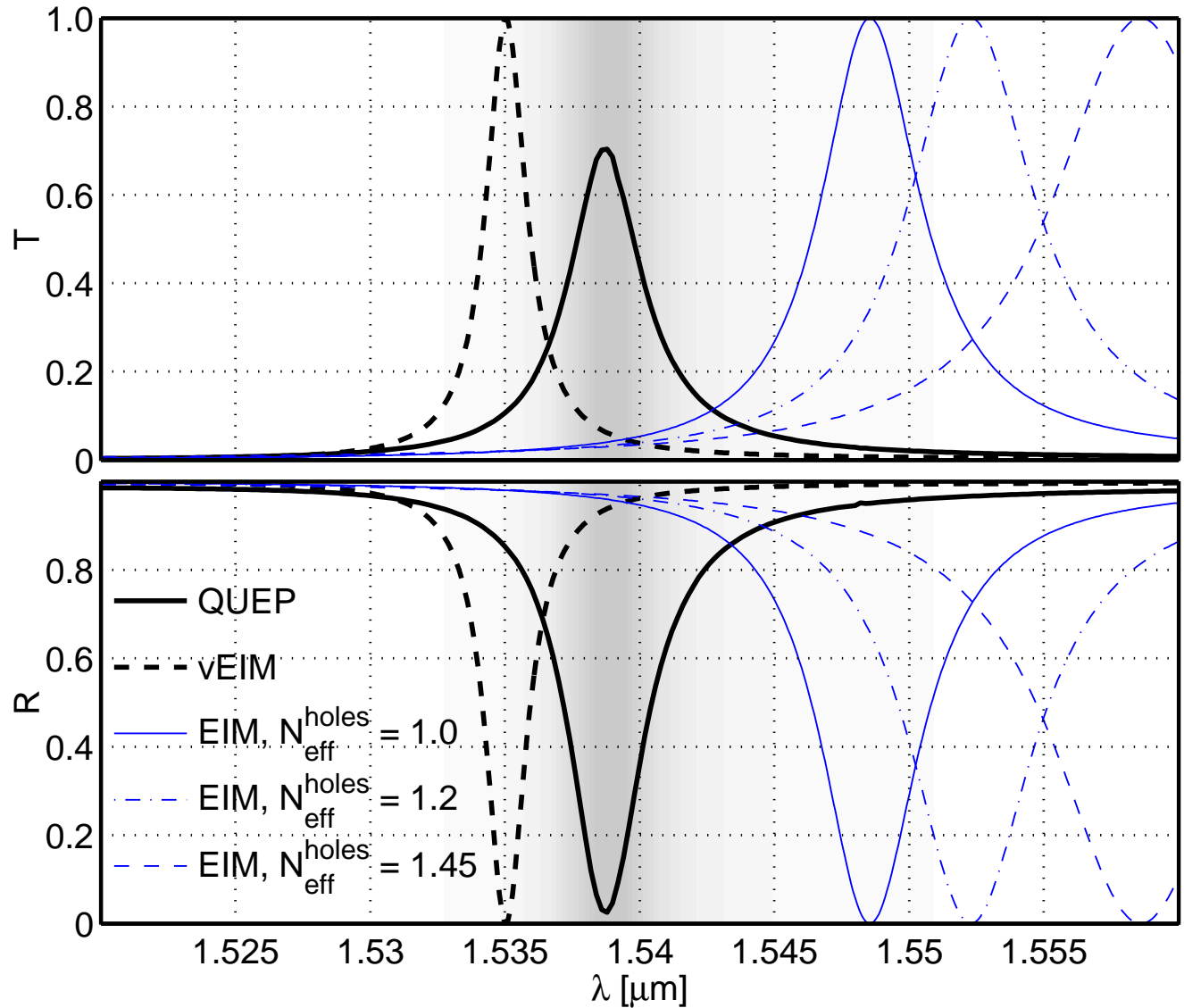
$$g = 0.135 \mu\text{m},$$

$$L = 1.515 \mu\text{m}.$$



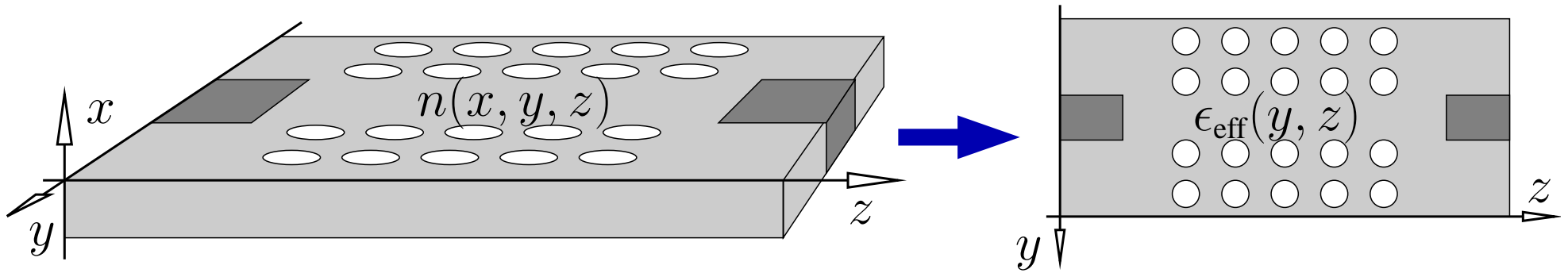
$$N_{\text{eff}}^{\text{slab}} \in [2.75, 2.77],$$

$$\epsilon_{\text{eff}}^{\text{holes}} \in [-0.96, -0.94] \text{ (vEIM)}.$$

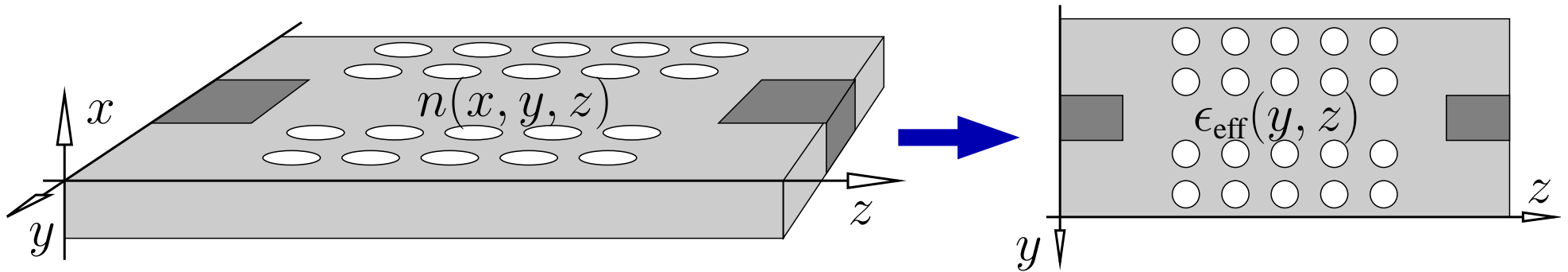


# 3D -> 2D, scalar

---



## 3D -> 2D, scalar



Choose  $\epsilon_r(x)$ ,  $\phi(x)$ ,  $\beta$ , with  $\partial_x^2 \phi + (k^2 \epsilon_r - \beta^2) \phi = 0$ .

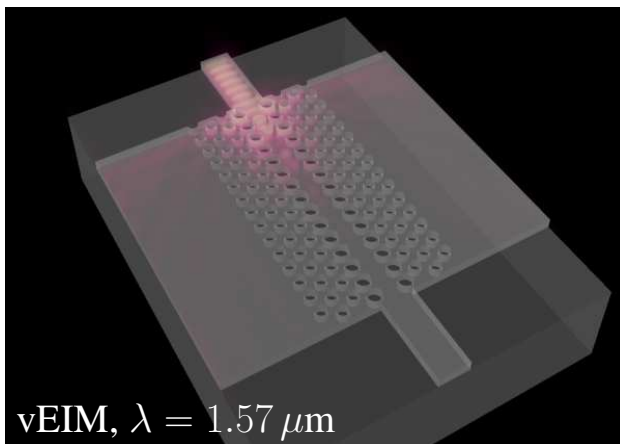
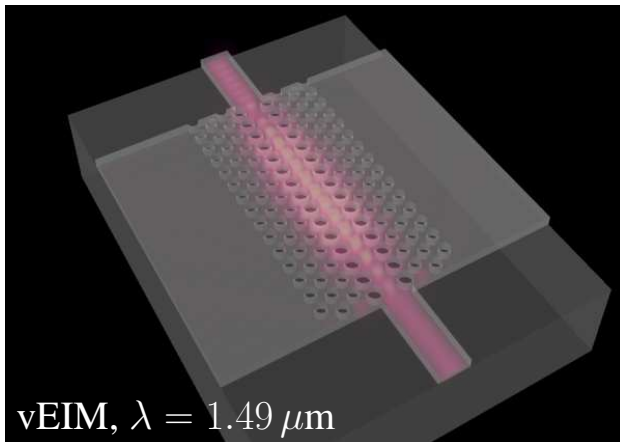
Assume  $E(x, \mathbf{y}, z) = \psi(\mathbf{y}, z) \phi(x)$ :



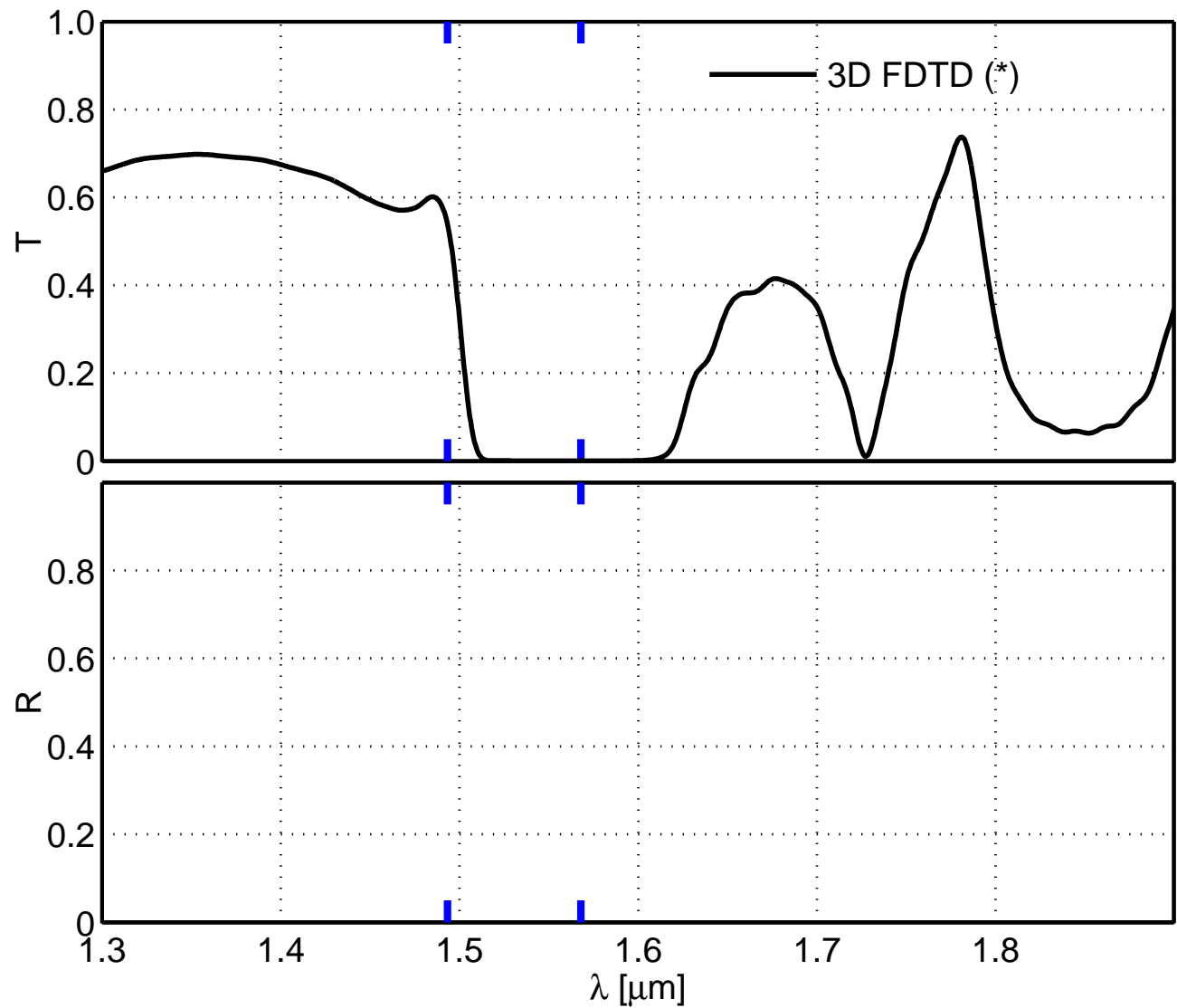
$$\partial_y^2 \psi + \partial_z^2 \psi + k^2 \epsilon_{\text{eff}}(\mathbf{y}, z) \psi = 0,$$

$$\epsilon_{\text{eff}}(\mathbf{y}, z) = (\beta/k)^2 + \frac{\int (\epsilon(x, \mathbf{y}, z) - \epsilon_r(x)) \phi^2(x) dx}{\int \phi^2(x) dx}, \quad \epsilon_{\text{eff}}(\mathbf{y}, z) = N_{\text{eff}}^2(\mathbf{y}, z).$$

# Outlook: 3D -> 2D, vectorial



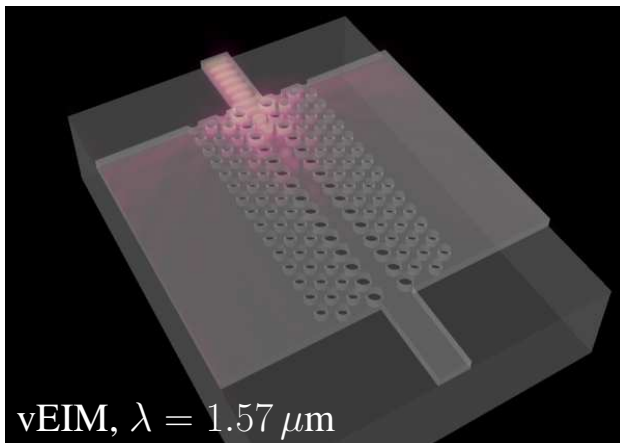
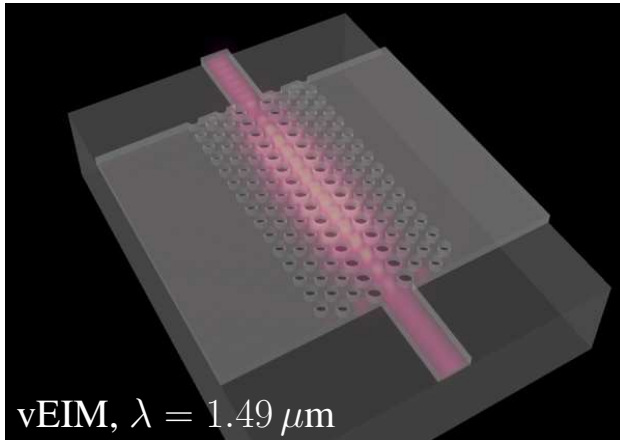
Contrast (1.445 : 3.48 : 1.0).



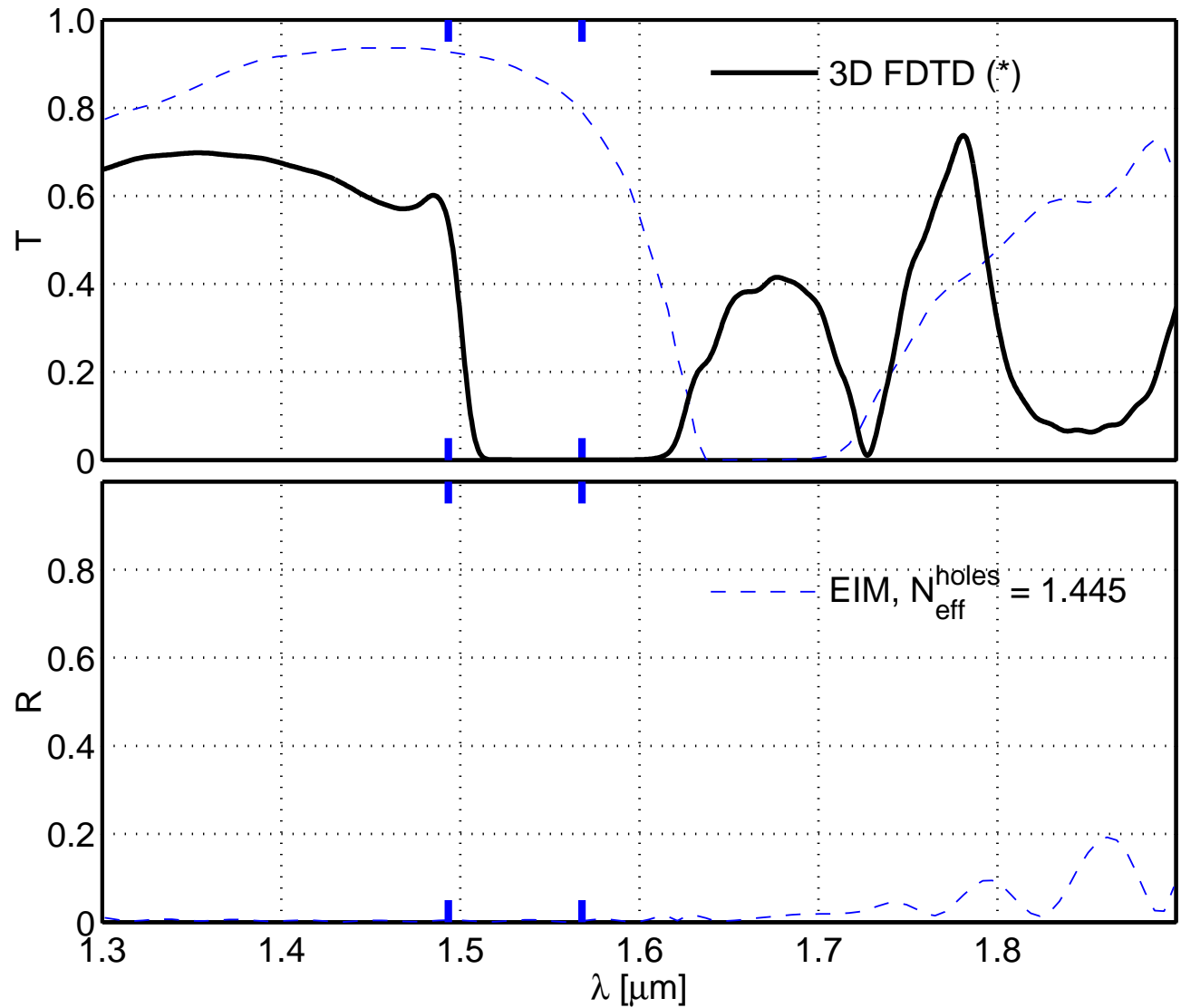
(\*) 3D FDTD: Lasse Kauppinen, IOMS group, MESA<sup>+</sup>, University of Twente.



# Outlook: 3D -> 2D, vectorial

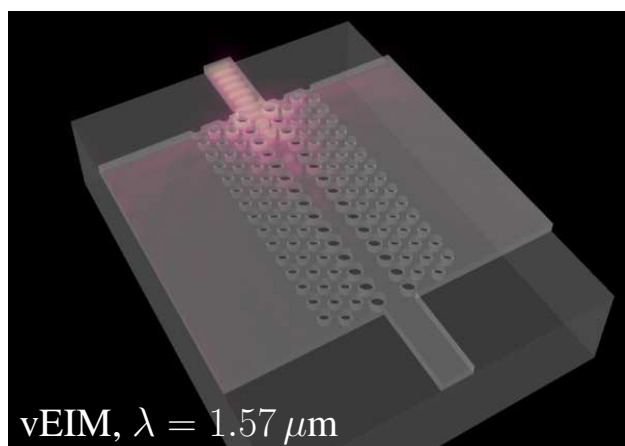
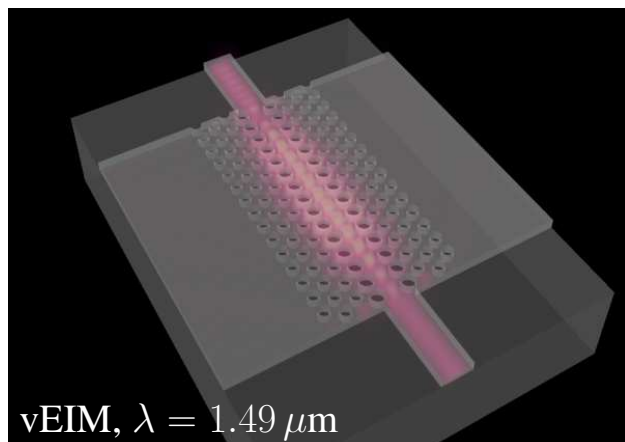


Contrast (1.445 : 3.48 : 1.0).

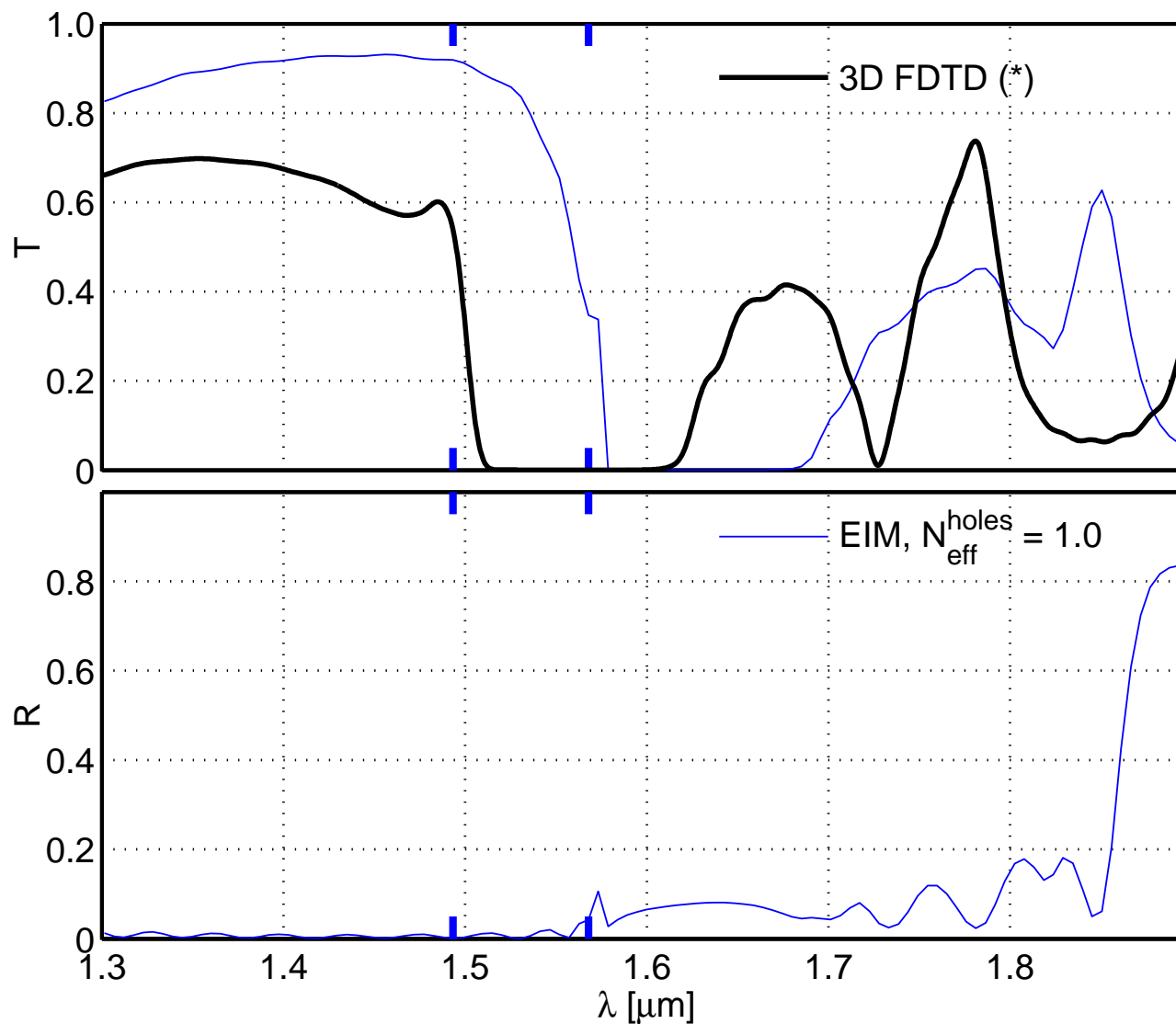


$$N_{\text{eff}}^{\text{slab}} \in [2.68, 2.96], N_{\text{eff}}^{\text{holes}} = 1.445 \text{ (EIM).}$$

# Outlook: 3D -> 2D, vectorial

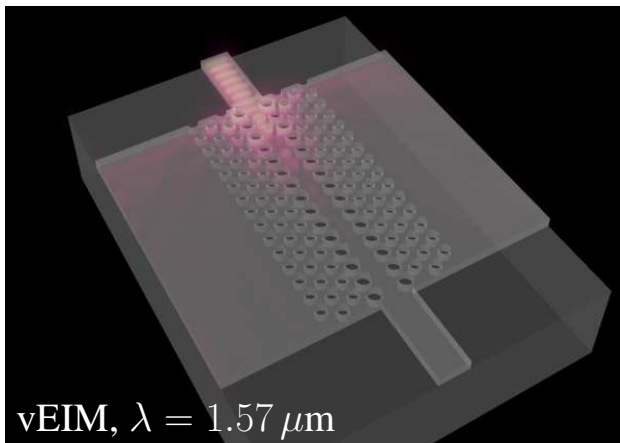
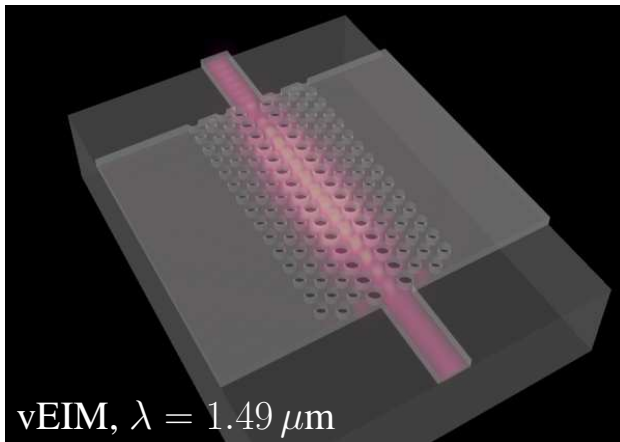


Contrast (1.445 : 3.48 : 1.0).

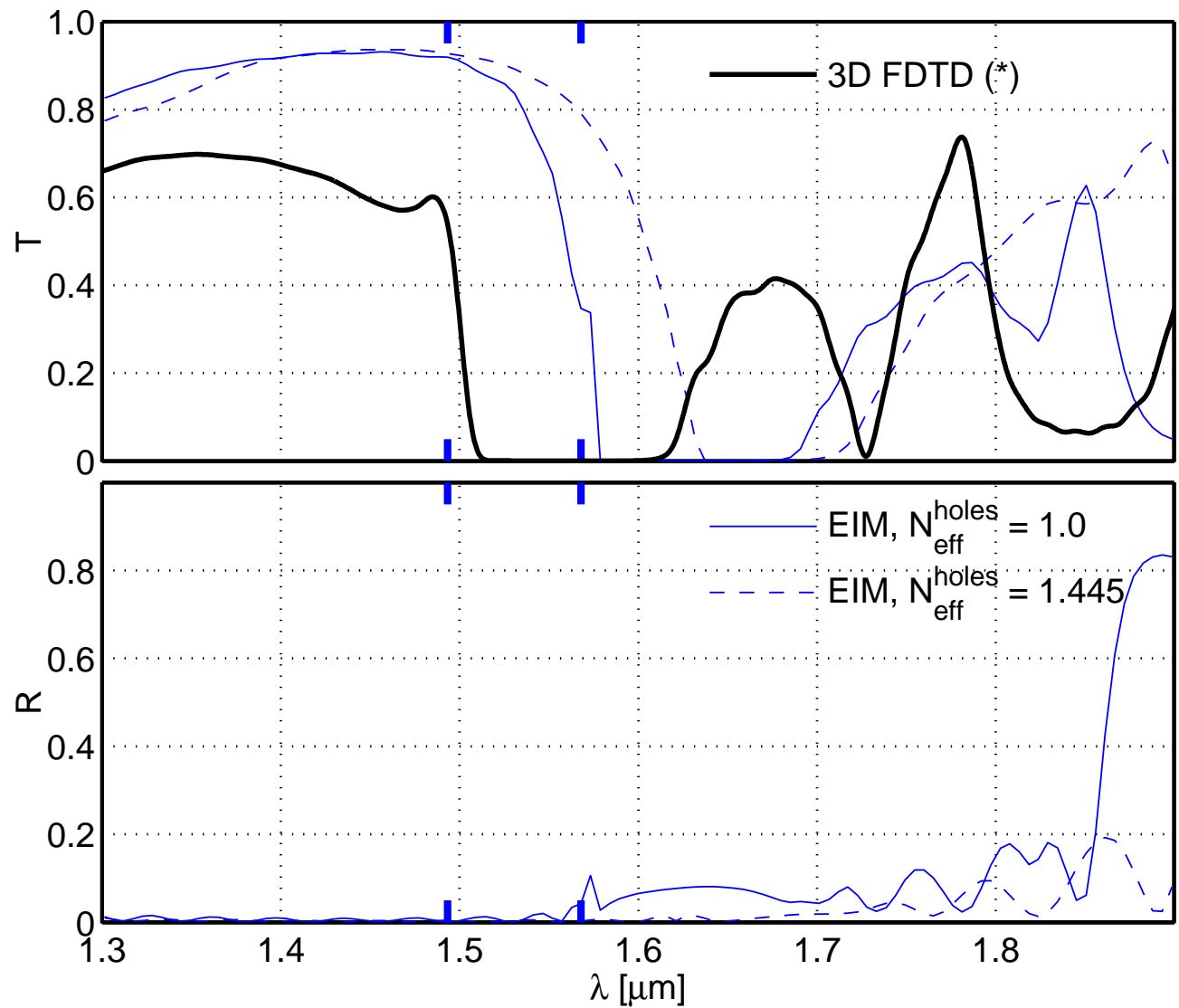


$N_{\text{eff}}^{\text{slab}} \in [2.68, 2.96]$ ,  $N_{\text{eff}}^{\text{holes}} = 1.0$  (EIM).

# Outlook: 3D -> 2D, vectorial

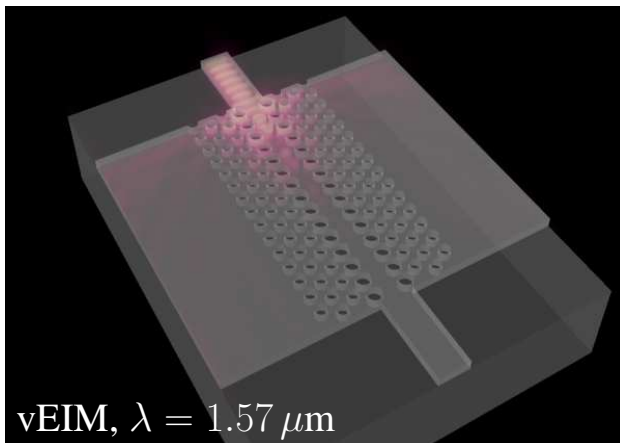
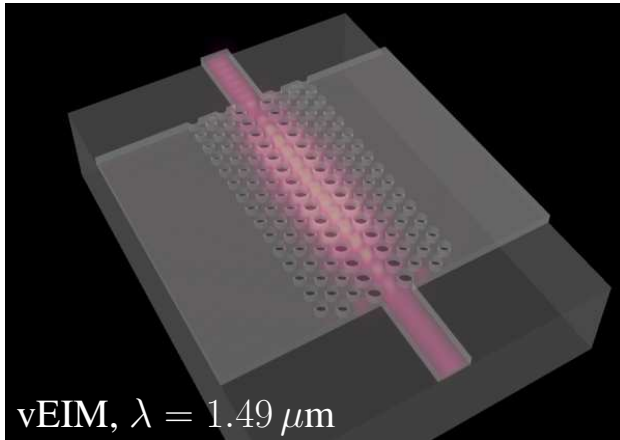


Contrast (1.445 : 3.48 : 1.0).

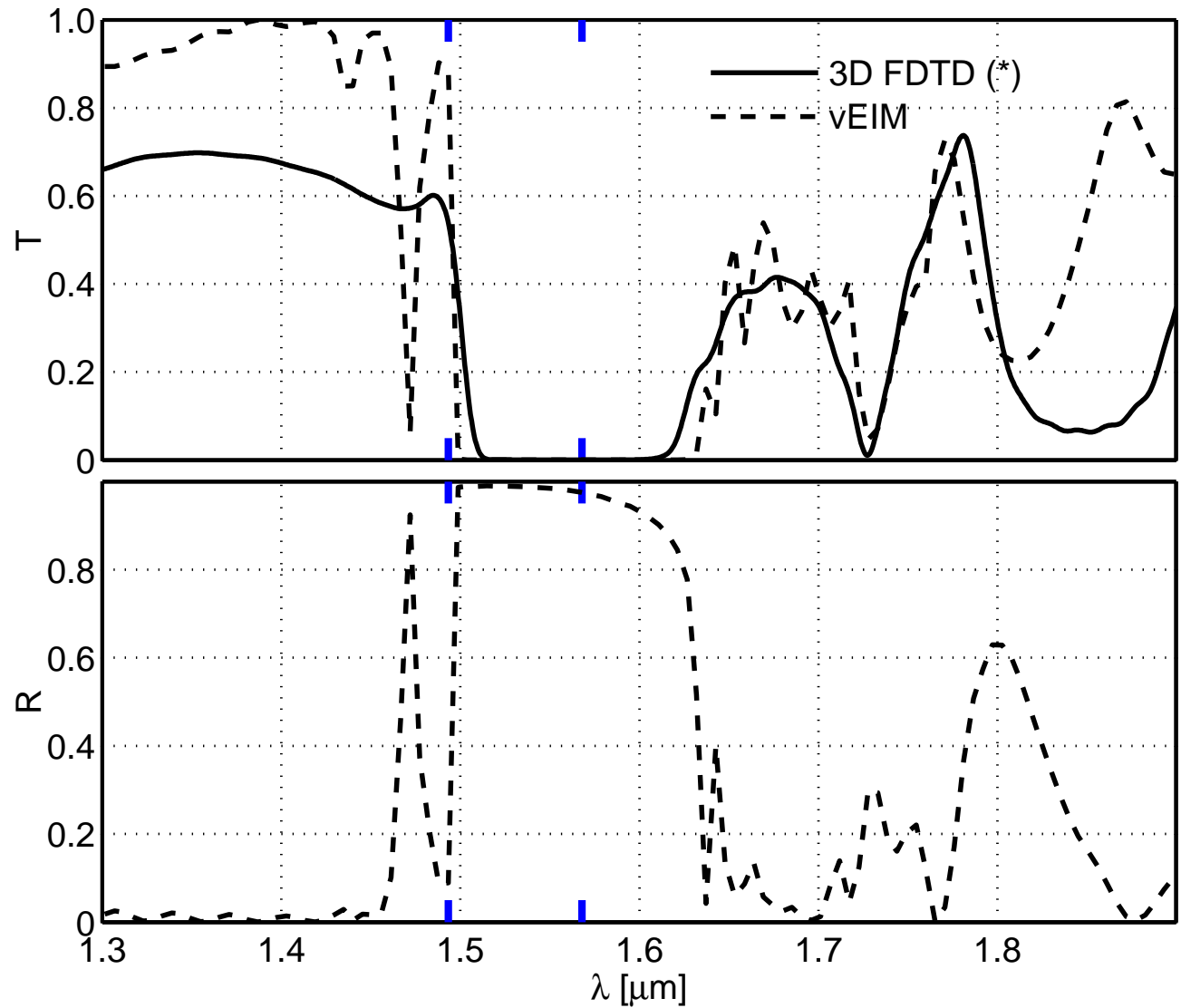


$N_{\text{eff}}^{\text{slab}} \in [2.68, 2.96]$ ,  $N_{\text{eff}}^{\text{holes}} = 1.445, 1.0$  (EIM).

# Outlook: 3D -> 2D, vectorial

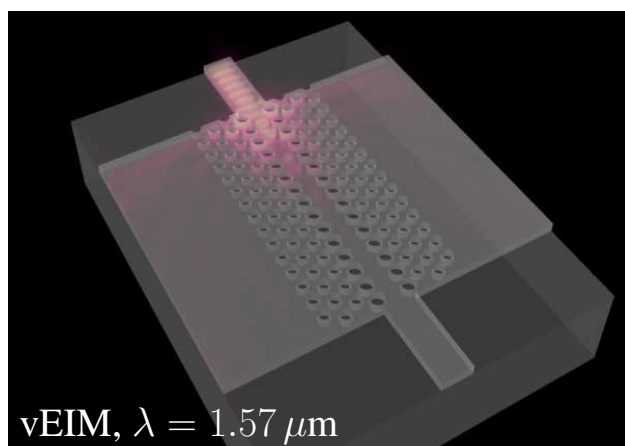
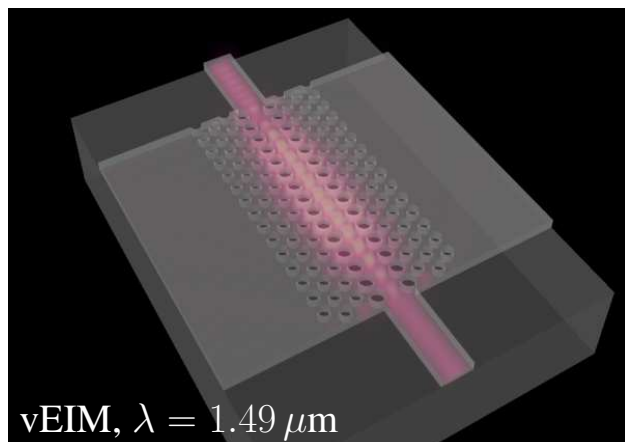


Contrast (1.445 : 3.48 : 1.0).

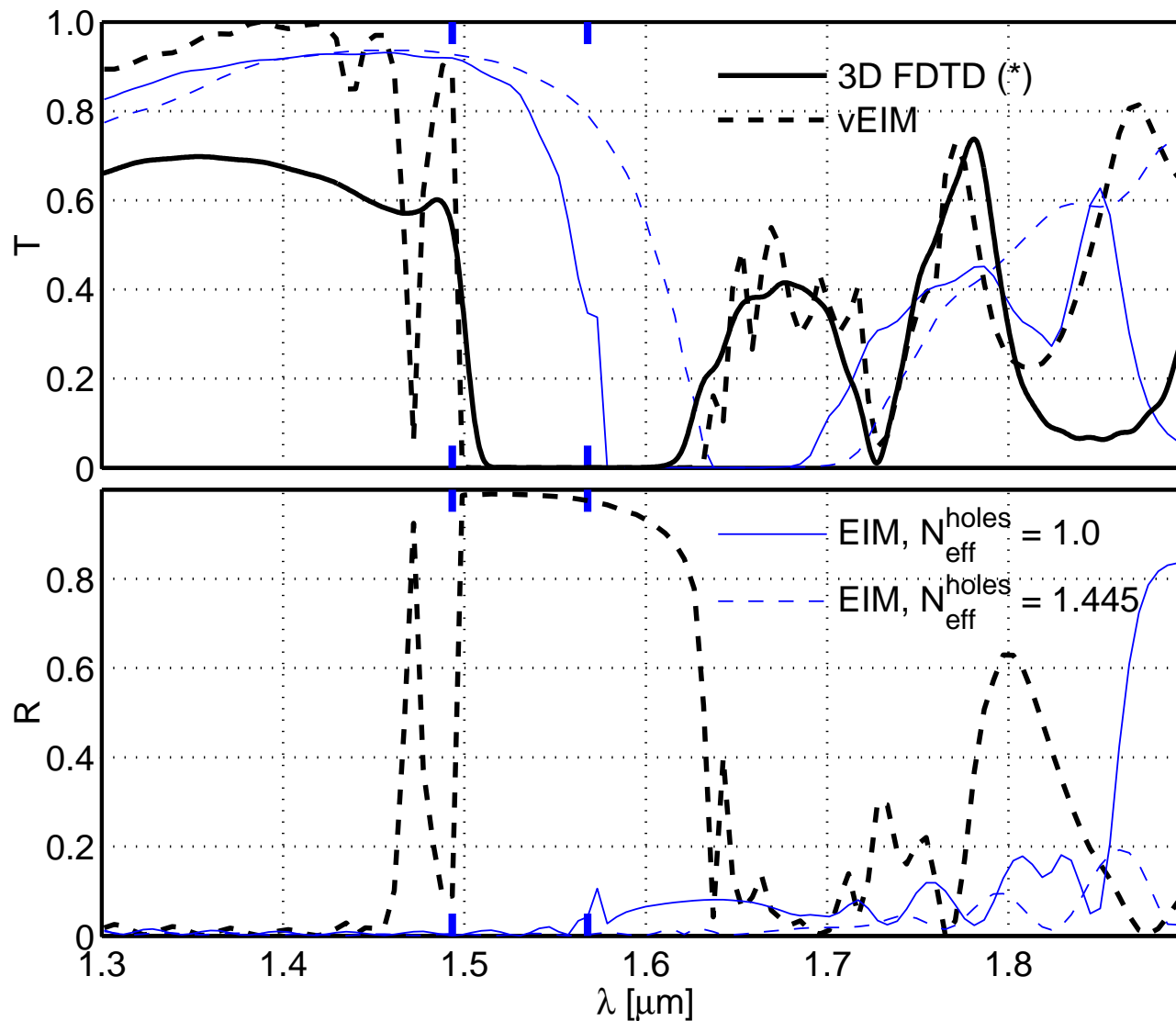


$$N_{\text{eff}}^{\text{slab}} \in [2.68, 2.96], \epsilon_{\text{eff}}^{\text{holes}} \in [-0.792, -1.146] \text{ (vEIM)}.$$

# Outlook: 3D -> 2D, vectorial



Contrast (1.445 : 3.48 : 1.0).



$$N_{\text{eff}}^{\text{slab}} \in [2.68, 2.96], \epsilon_{\text{eff}}^{\text{holes}} \in [-0.792, -1.146] \text{ (vEIM)}.$$

## Concluding remarks

---

Effective index treatment of photonic crystal slabs:

- a mere qualitative, sometimes perhaps a crude quantitative approximation,
- where unavoidable:  
use effective permittivity  $\epsilon_{\text{eff}} = N_{\text{eff}}^2$  with perturbational correction term;  
 $\epsilon_{\text{eff}}$  can well be smaller than one, or be negative,  
less heuristic approach with well-defined field approximation,
- in general: no guarantees.

